

Figure 1. Mean number of admissions in hospital per month

Belgium, 2012 (mean) : 1161 patients

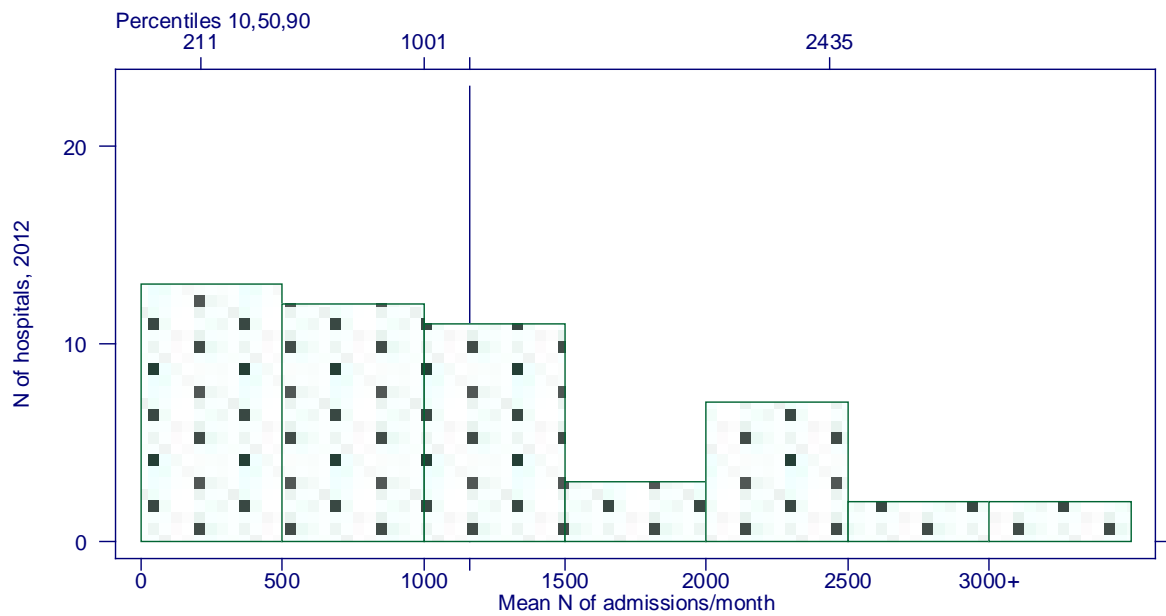


Figure 2. Average length of stay in hospital

Belgium, 2012 (mean) : 10.6 days

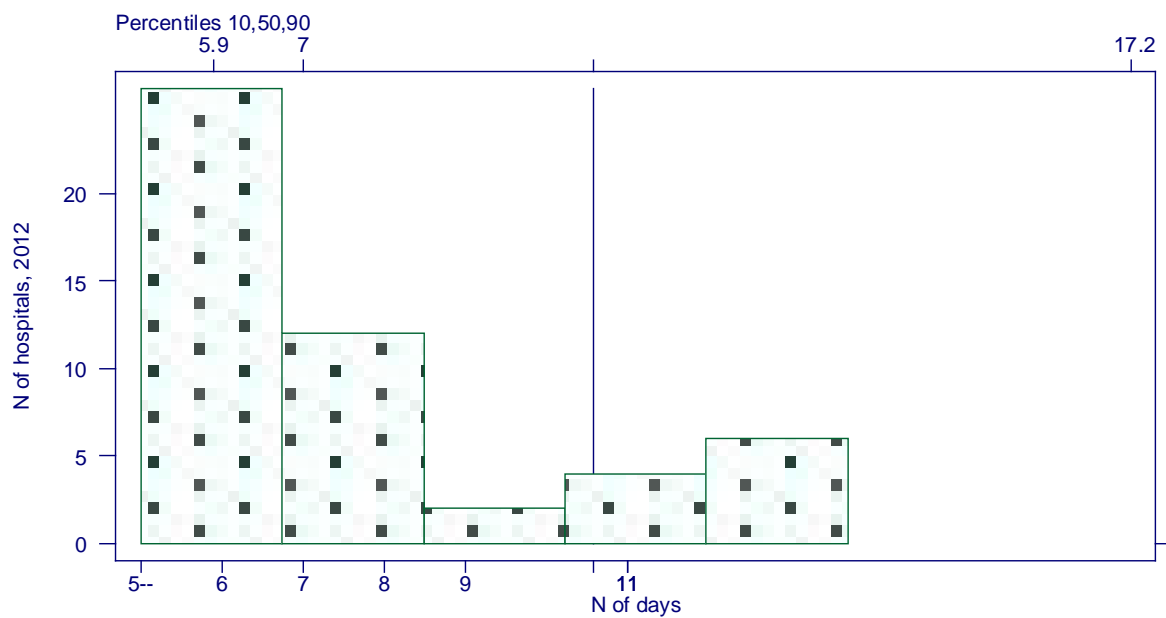


Figure 3. Mean number of admissions in ICU per month

Belgium, 2012 (mean) : 101 patients

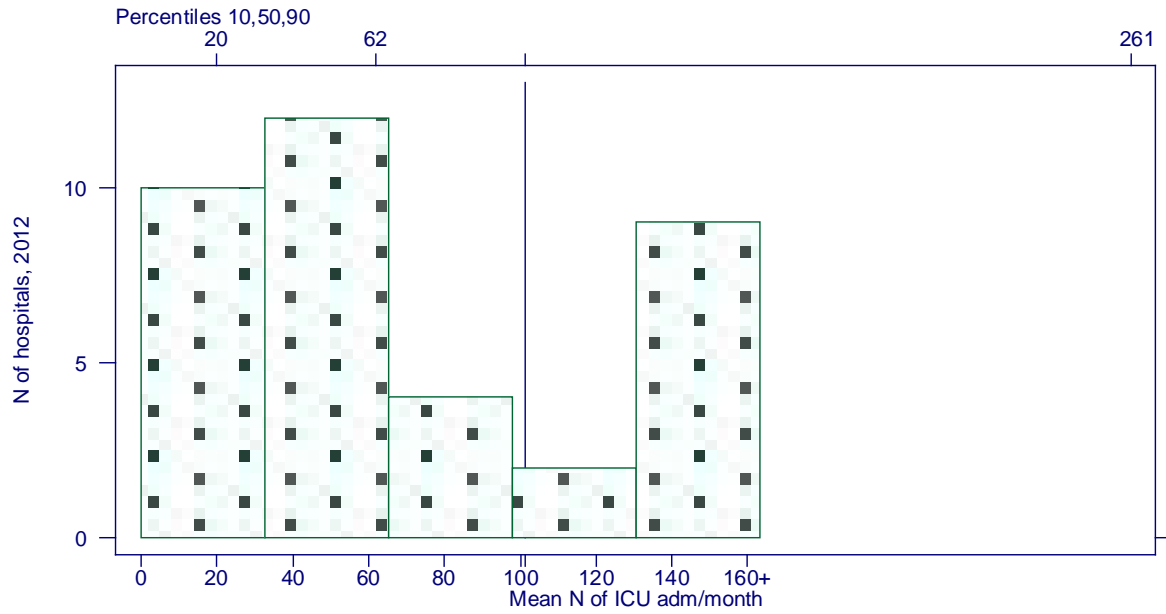


Figure 4. Average length of stay in ICU

Belgium, 2012 (mean) : 5.8 days

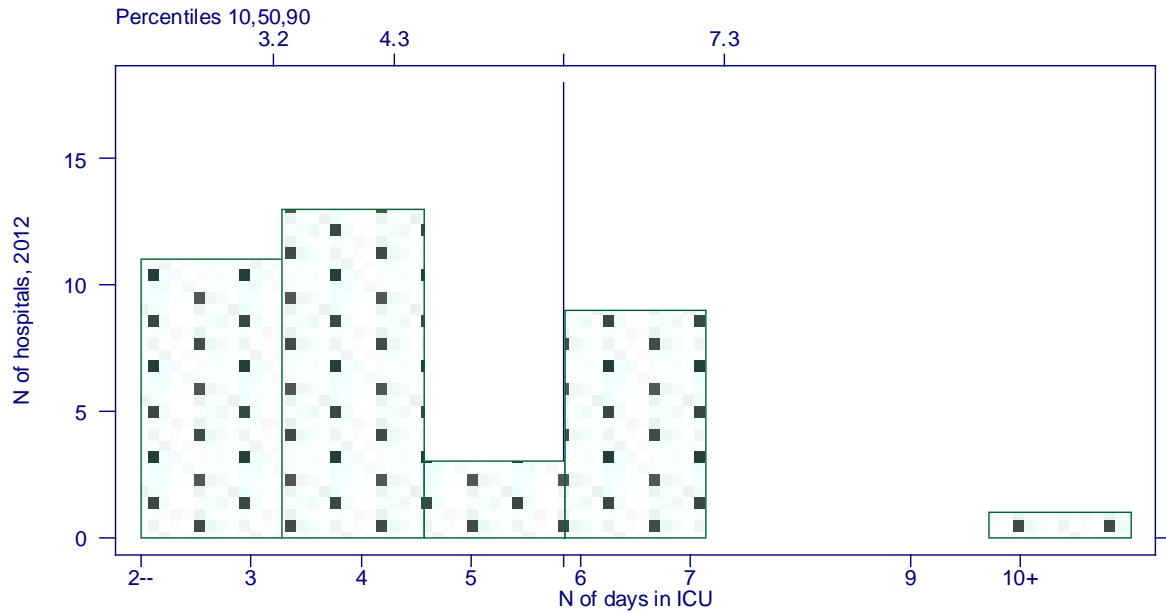


Figure 5. N hemocultures per 1000 patient-days

Belgium, 2012 (mean) : 47.7 hemoc./1000 pd

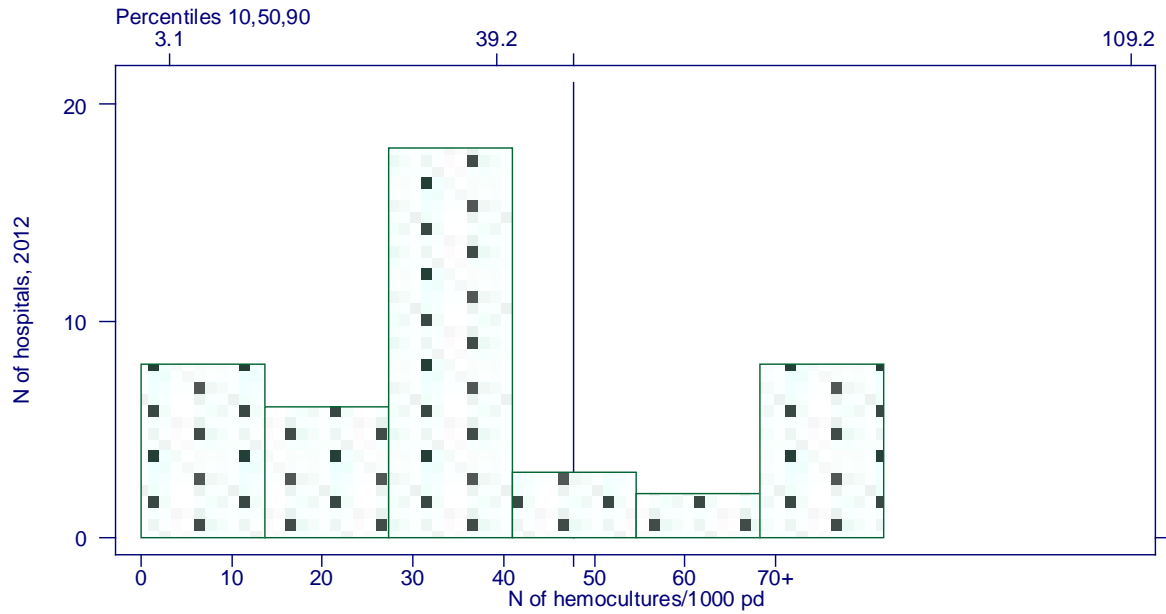


Figure 6. Incidence of nosocomial septicemia

Belgium, 2012 (mean) : 6.3 /1000 admissions (95% CI 6.1 - 6.6)

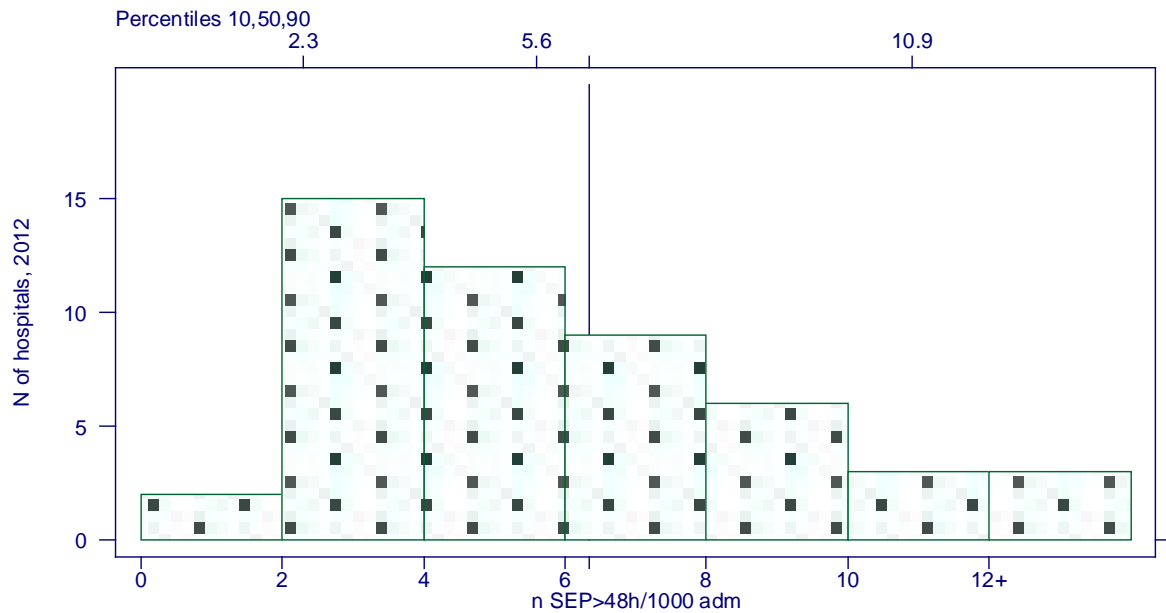


Figure 7. Incidence density of nosocomial septicemia

Belgium, 2012 (mean) : 8.7 /10000 pt-days (95% CI 8.3 - 9)

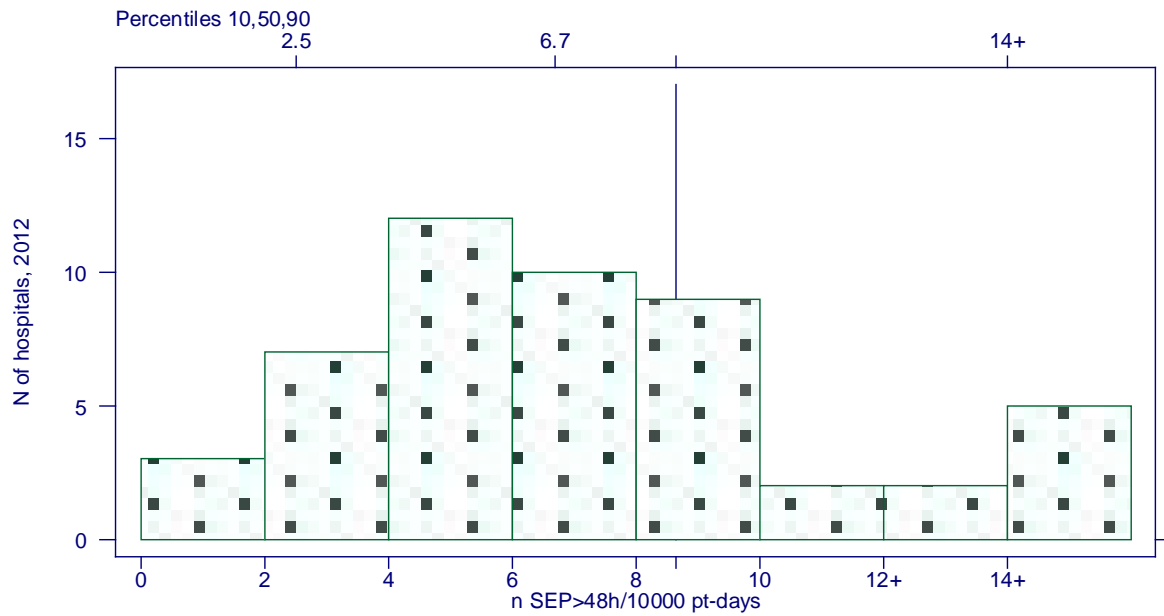


Figure 8. Incidence of nosocomial septicemia in ICU

Belgium, 2012 (mean) : 18.3 /1000 ICU adm. (95% CI 16.7 - 19.9)

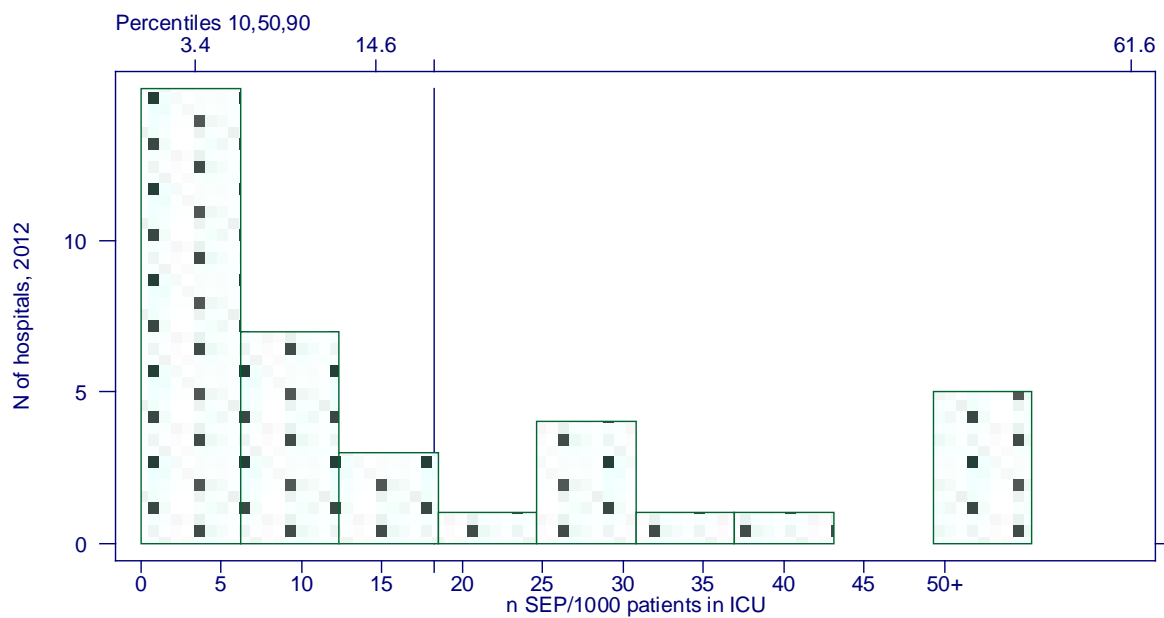


Figure 9. Incidence density of nosocomial septicemia in ICU

Belgium, 2012 (mean) : 42.4 /10000 pt-days (95% CI 38.9 - 46.2)

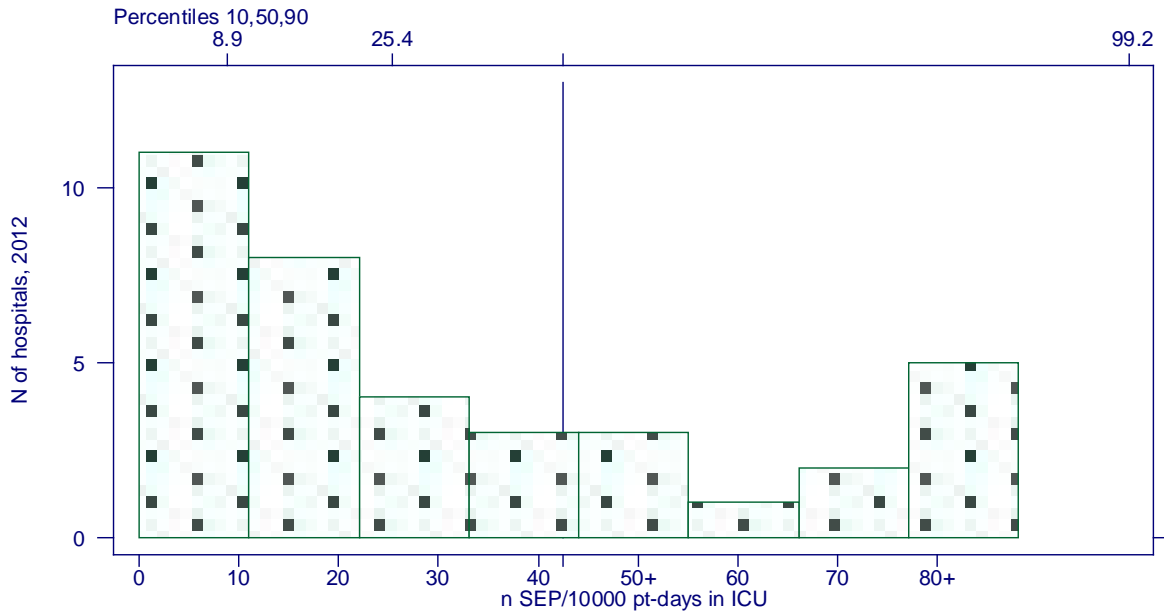


Figure 10. Incidence density of catheter-related septicemia

Belgium, 2012 (mean) : 1.7 /10000 pt-days (95% CI 1.5 - 1.8)

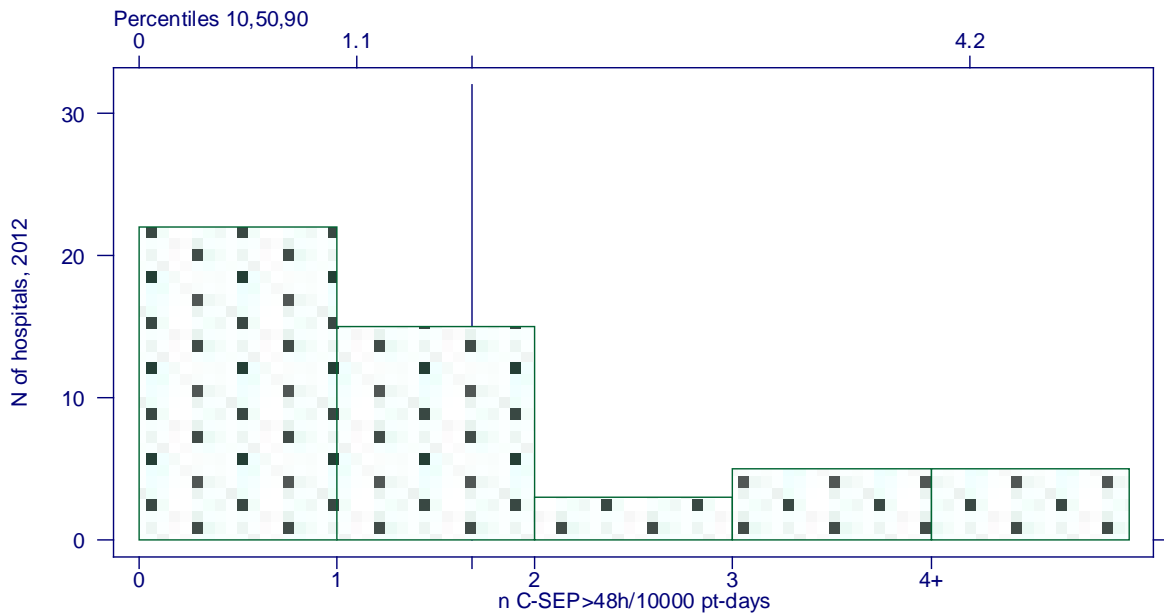


Figure 11. Incidence density of secondary septicemia

Belgium, 2012 (mean) : 4.2 /10000 pt-days (95% CI 4 - 4.4)

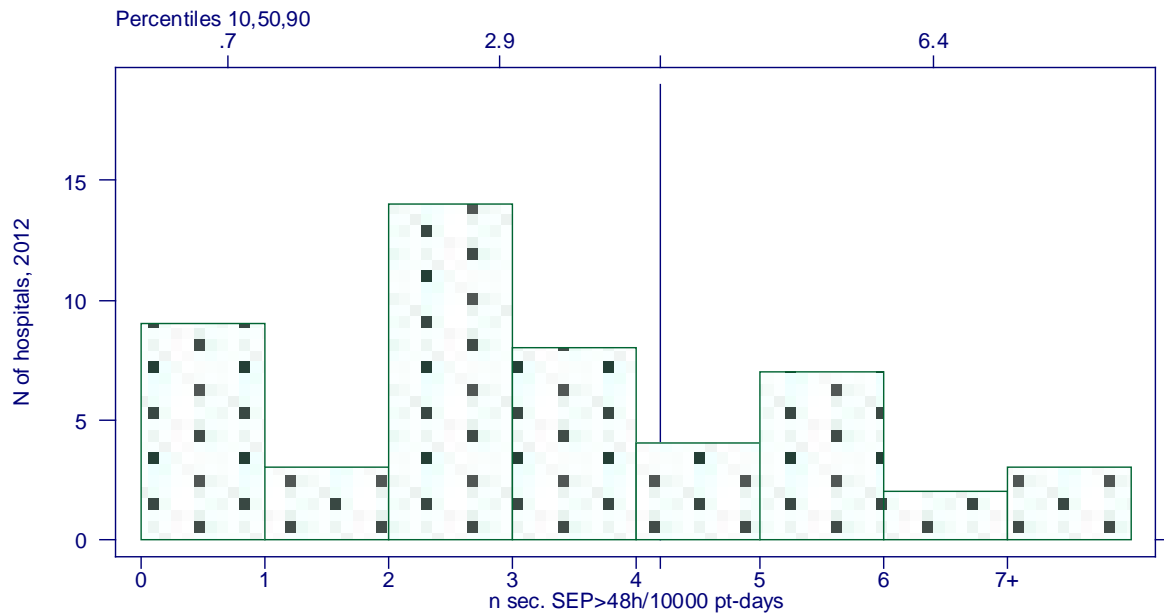


Figure 12. Incidence density of septicemia of unknown origin

Belgium, 2012 (mean) : 2.8 /10000 pt-days (95% CI 2.7 - 3)

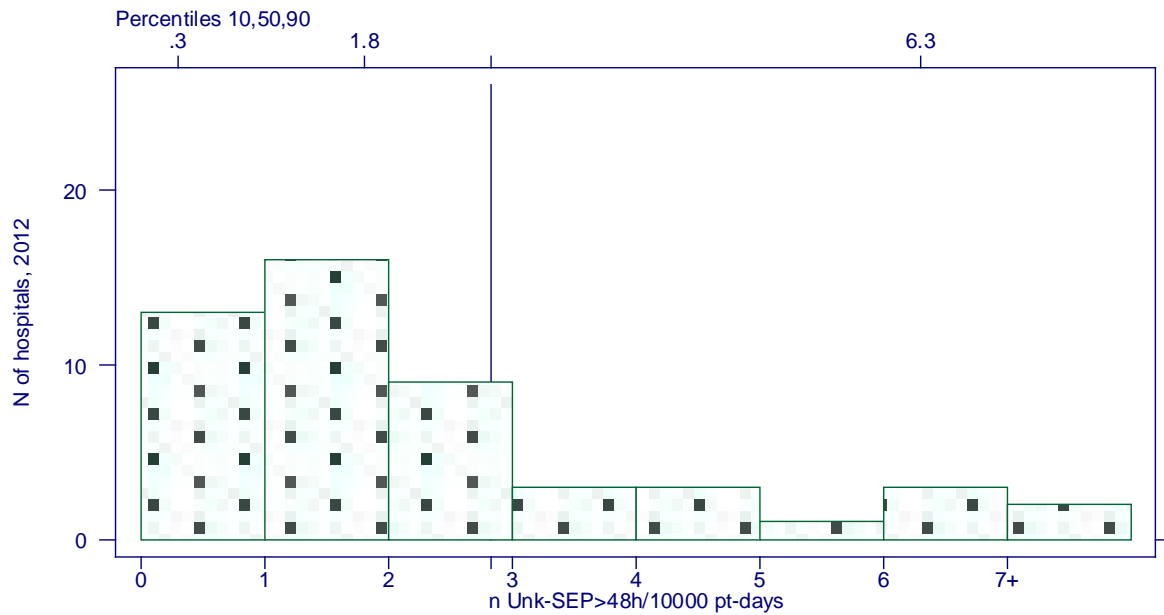


Figure 13. SEP incidence - hospitals with <200 beds

Belgium, 2012 (mean) : 7 /10000 pt-days (95% CI 6.1 - 7.9)

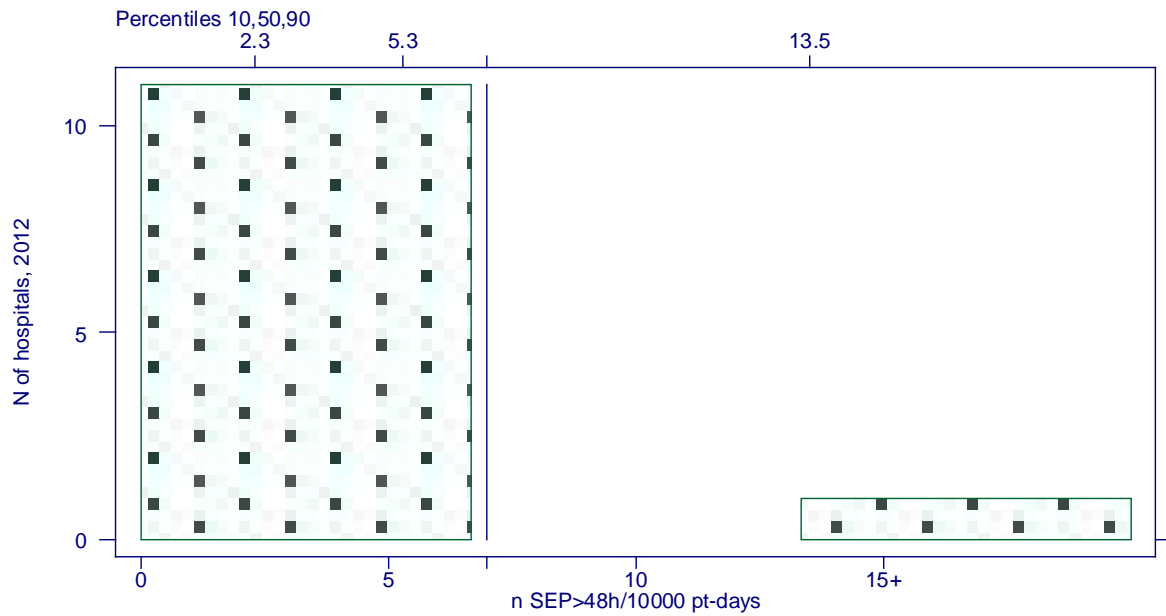


Figure 14. SEP incidence in the ICU - hospitals with <300 beds

Belgium, 2012 (mean) : 44.1 /10000 pt-days (95% CI 40.2 - 48.4)

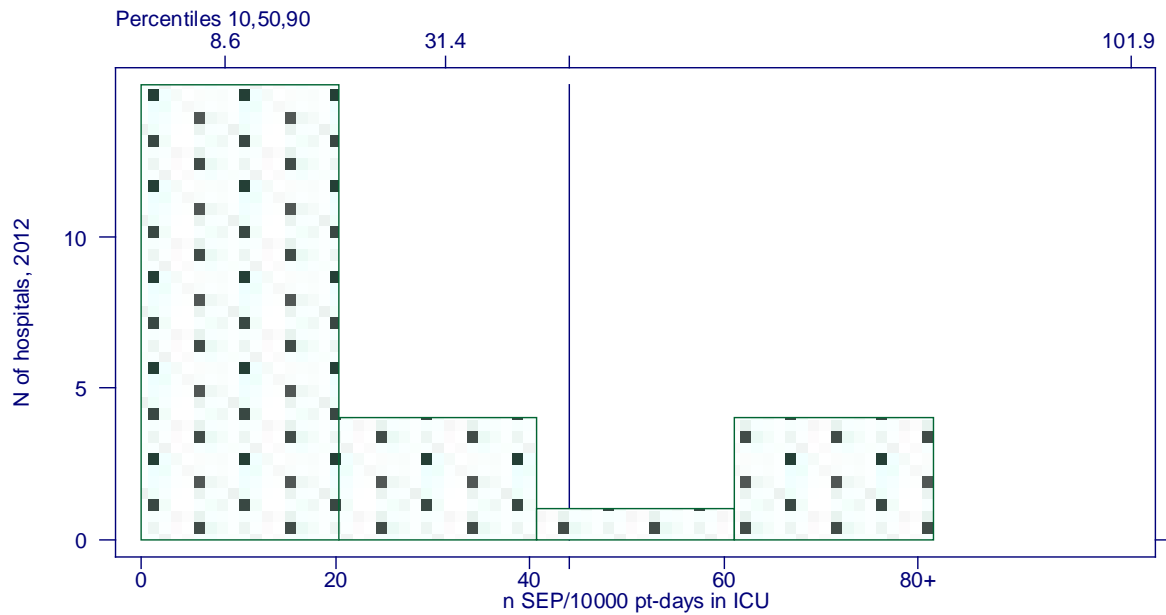


Figure 15. SEP incidence - hospitals with 200-399 beds

Belgium, 2012 (mean) : 7.7 /10000 pt-days (95% CI 7.2 - 8.2)

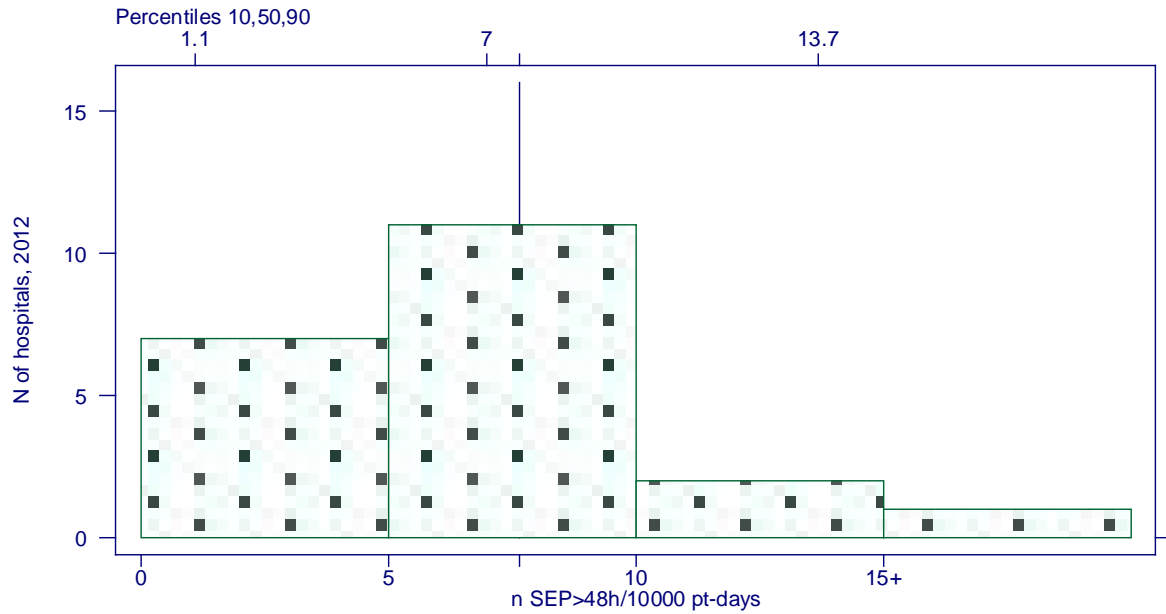


Figure 16. SEP incidence in the ICU - hospitals with 200-399 beds

Belgium, 2012 (mean) : 52.2 /10000 pt-days (95% CI 44.3 - 61)

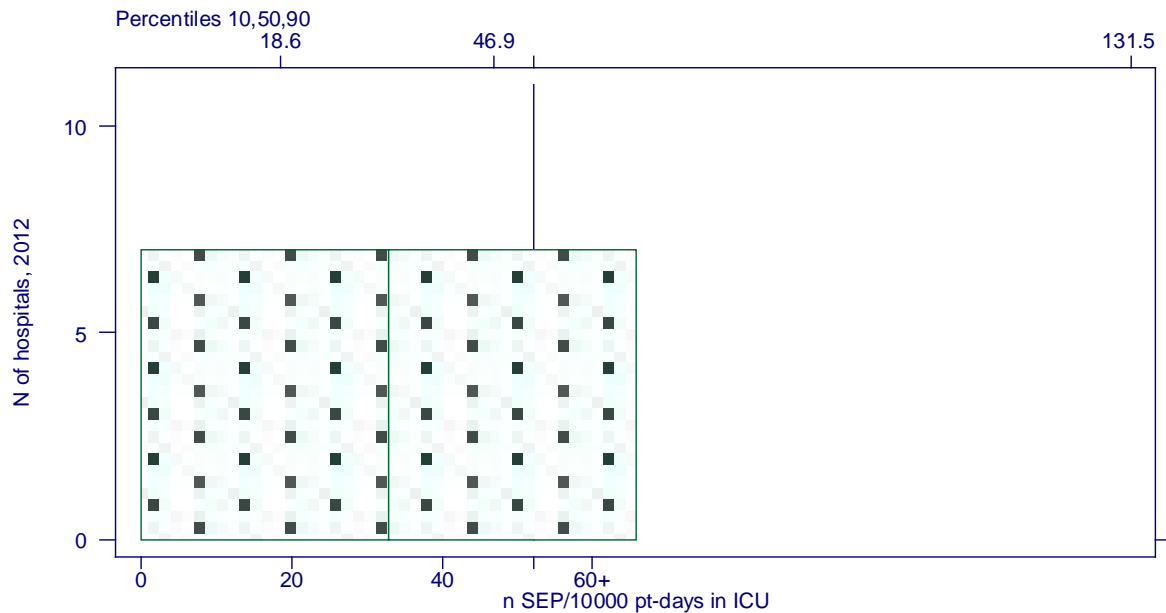




Figure 17. SEP incidence - hospitals with  $\geq 400$  beds

Belgium, 2012 (mean) : 9.6 /10000 pt-days (95% CI 9.2 - 10.1)

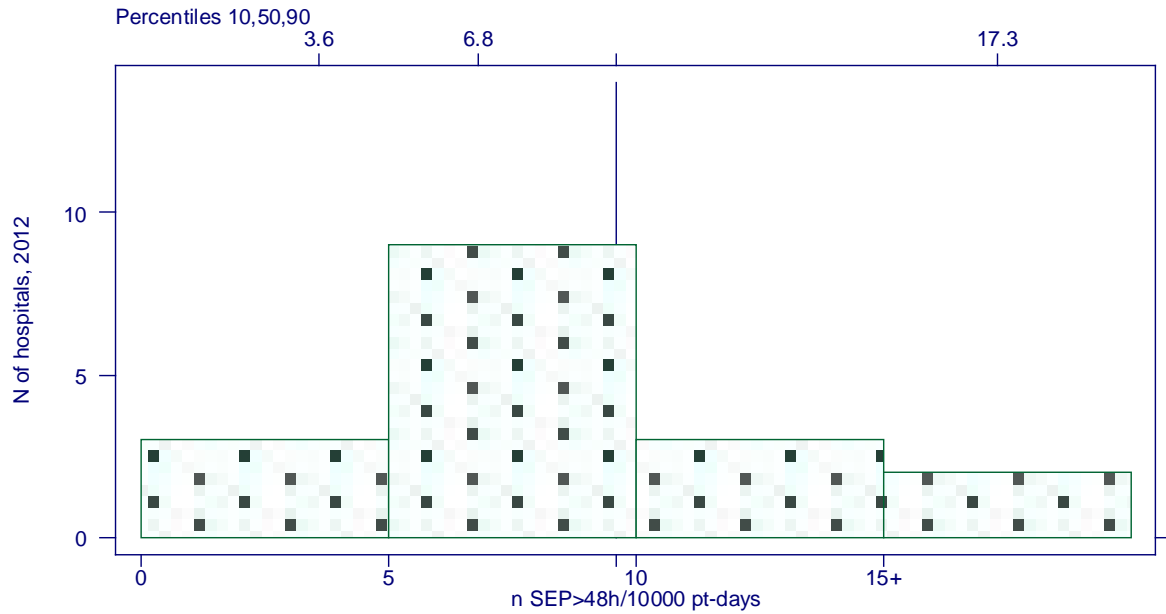


Figure 18. SEP incidence in the ICU - hospitals with  $\geq 400$  beds

Belgium, 2012 (mean) : 40.9 /10000 pt-days (95% CI 36.7 - 45.4)

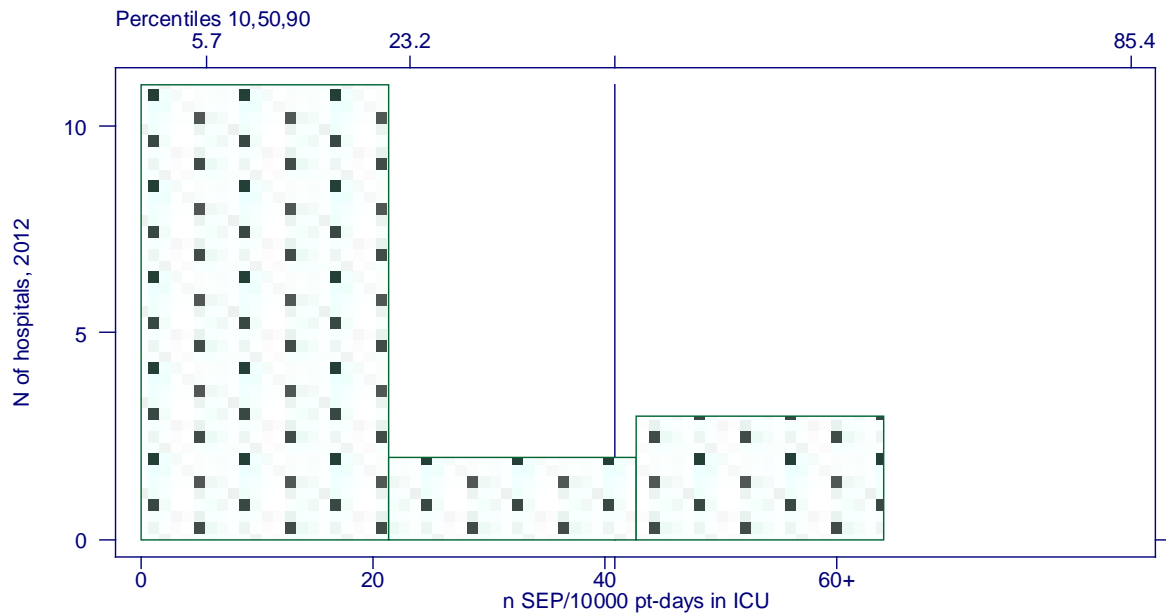


Figure 19. Incidence SEP with Gram-positive cocci

Belgium, 2012 (mean) : 3.83 /10000 pt-days (95% CI 3.62 - 4.04)

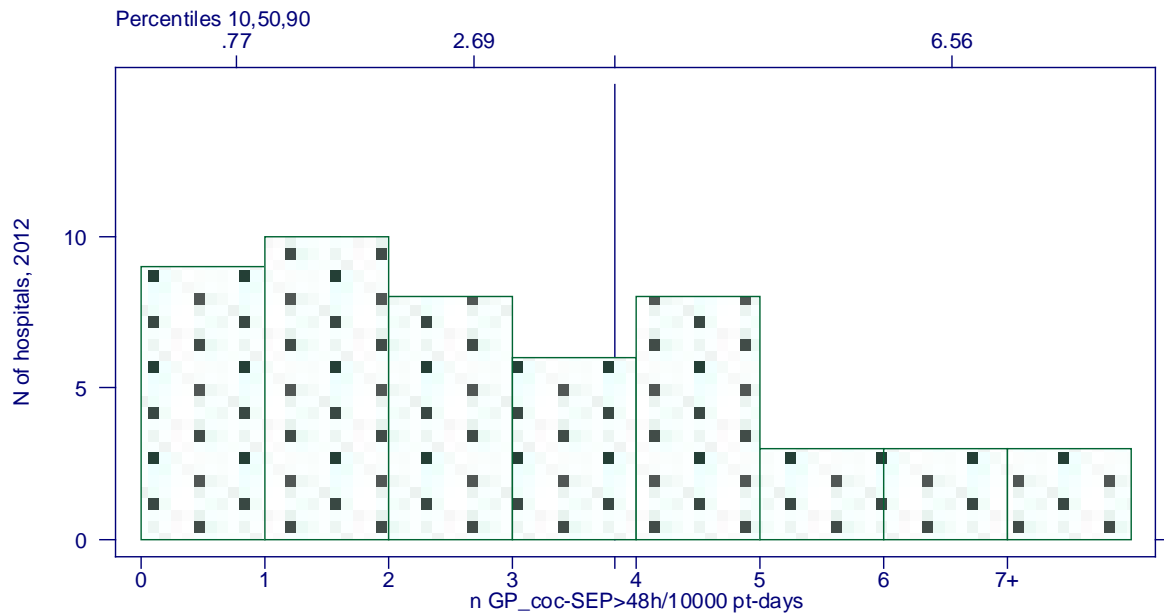


Figure 20. Incidence SEP with coagulase-negative staphylococci

Belgium, 2012 (mean) : 1.66 /10000 pt-days (95% CI 1.52 - 1.8)

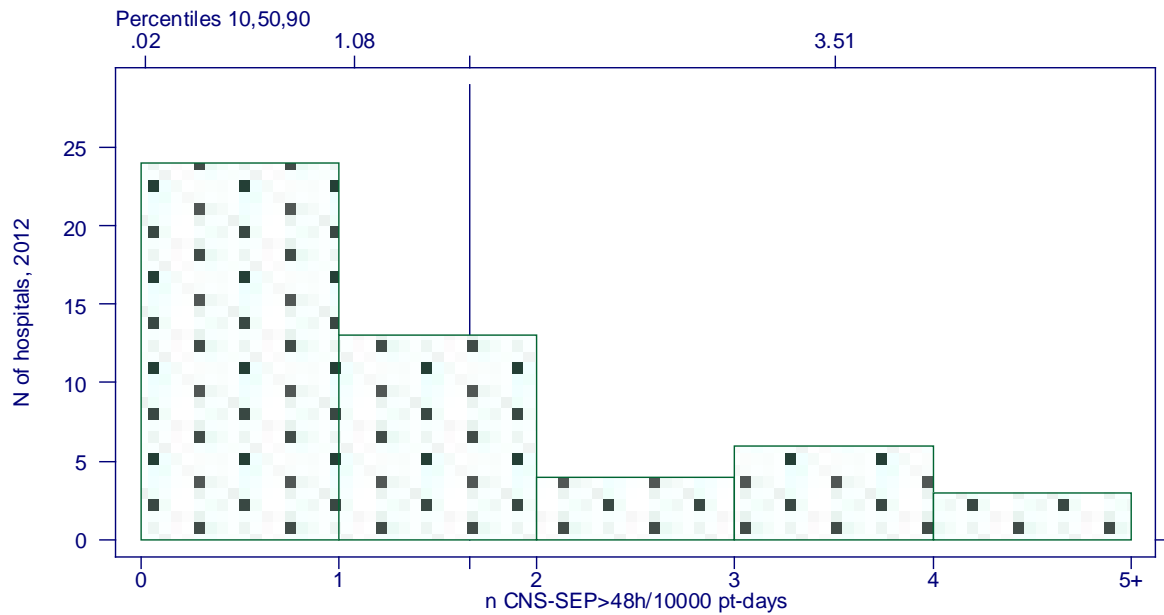


Figure 21. Incidence SEP with *S. aureus*

Belgium, 2012 (mean) : 1.05 /10000 pt-days (95% CI .94 - 1.16)

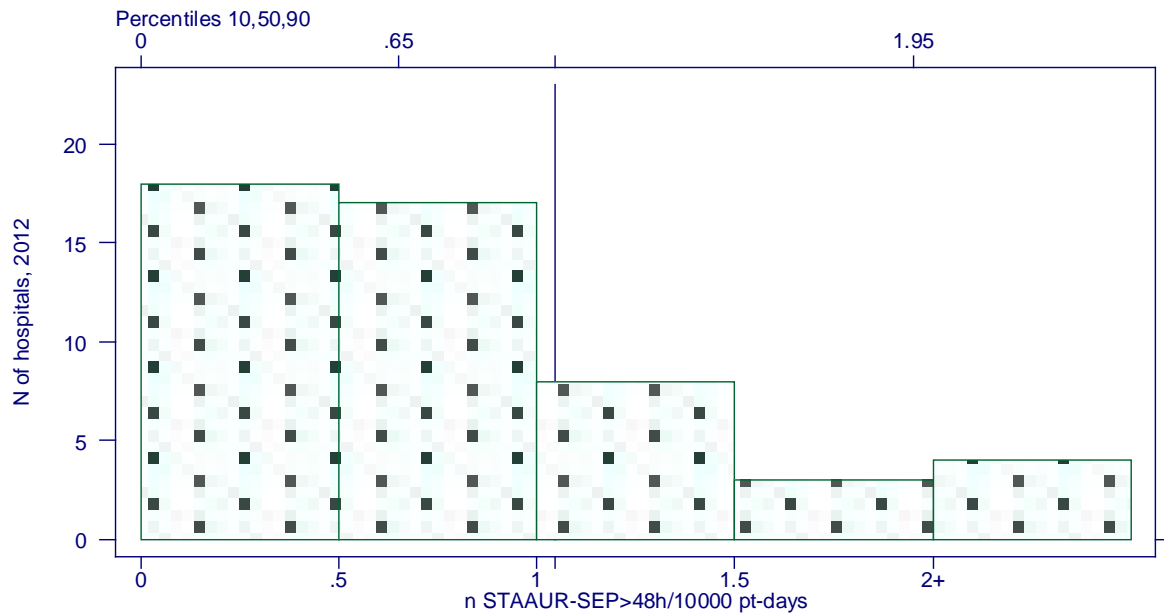


Figure 22. Incidence SEP with *Enterococcus* spp.

Belgium, 2012 (mean) : .94 /10000 pt-days (95% CI .84 - 1.05)

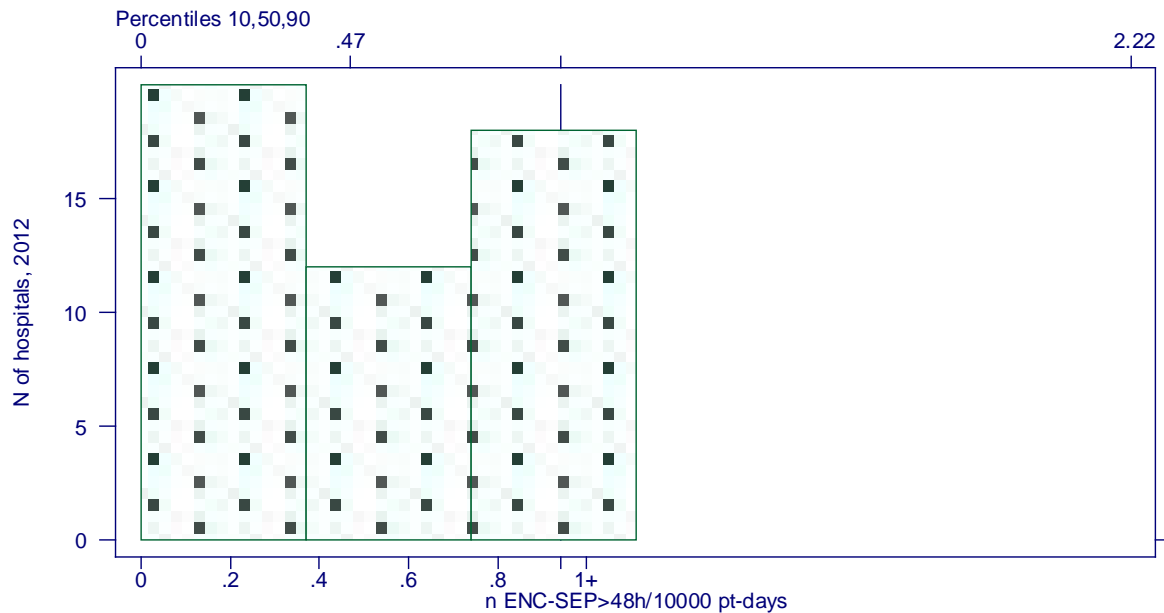


Figure 23. Incidence SEP with *Streptococcus* spp.

Belgium, 2012 (mean) : .57 /10000 pt-days (95% CI .49 - .65)

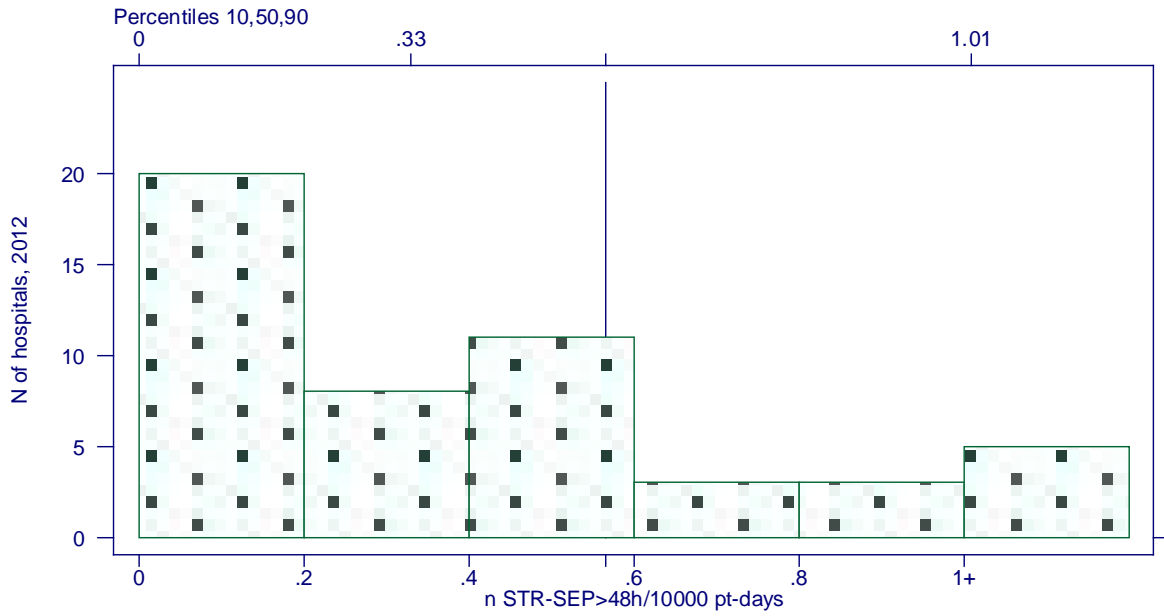


Figure 24. Incidence SEP with enterobacteriaceae

Belgium, 2012 (mean) : 3.48 /10000 pt-days (95% CI 3.28 - 3.68)

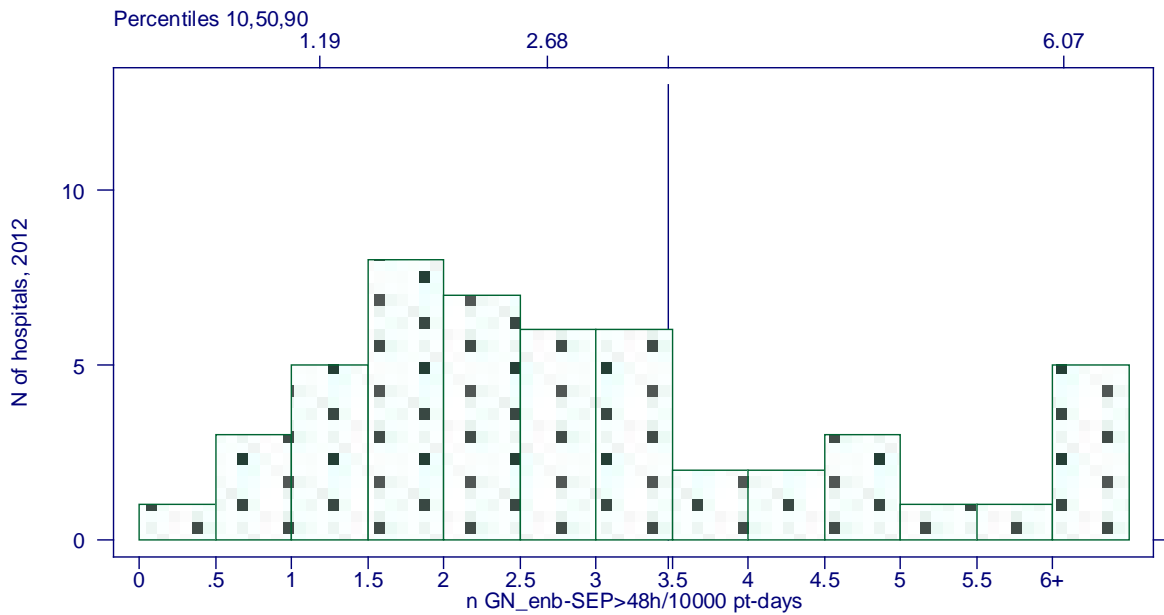


Figure 25. Incidence SEP with *Escherichia* spp.

Belgium, 2012 (mean) : 1.84 /10000 pt-days (95% CI 1.7 - 1.99)

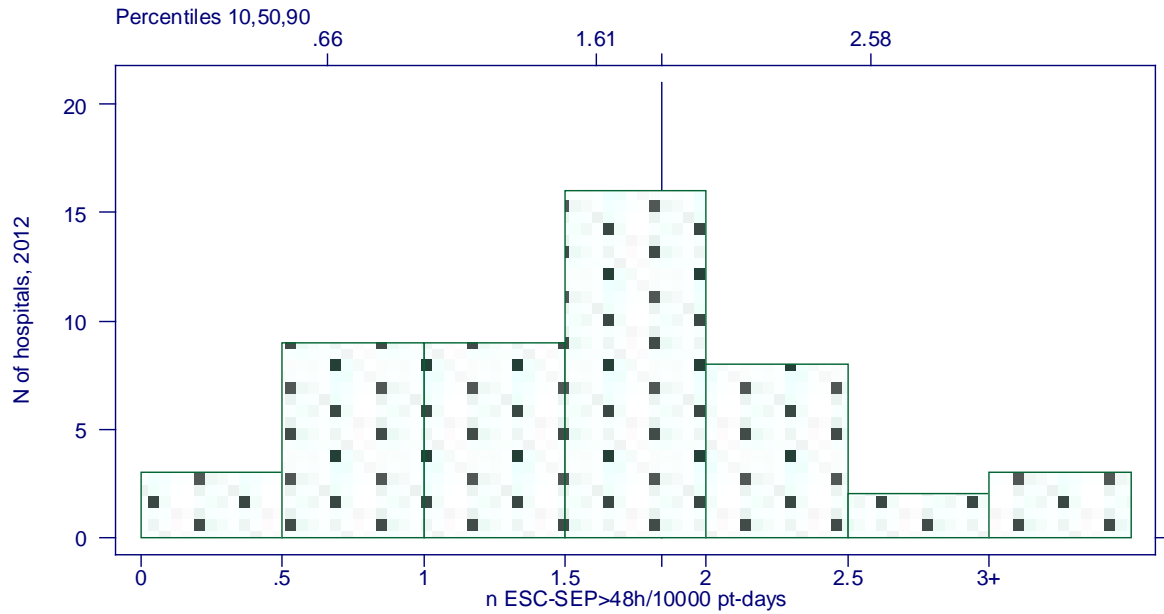


Figure 26. Incidence SEP with *Enterobacter* spp.

Belgium, 2012 (mean) : .44 /10000 pt-days (95% CI .37 - .52)

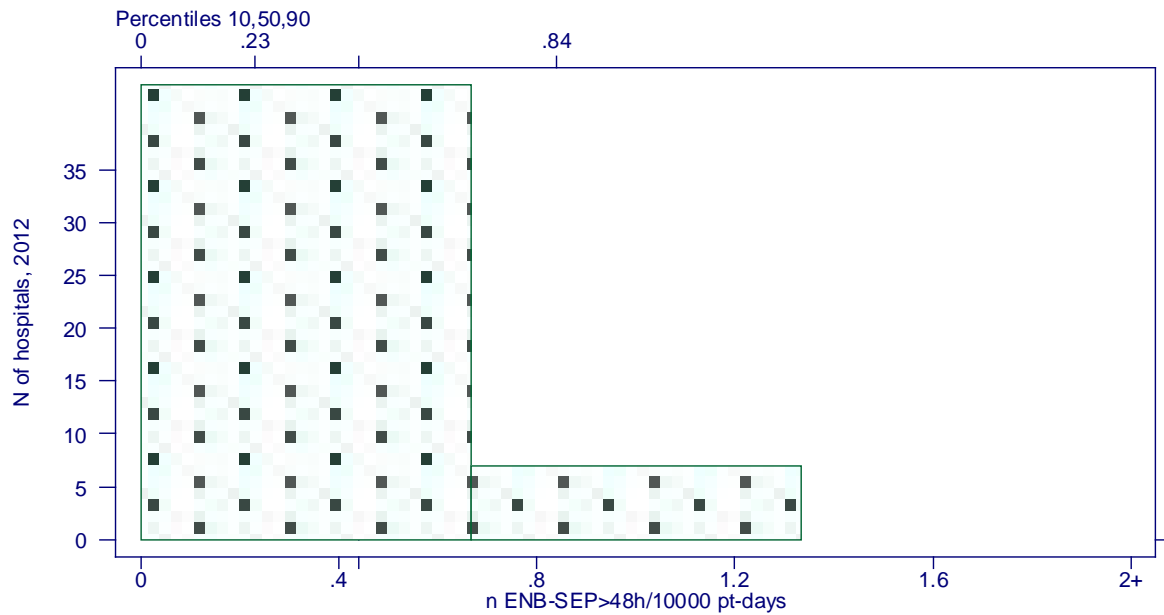


Figure 27. Incidence SEP with Klebsiella spp.

Belgium, 2012 (mean) : .78 /10000 pt-days (95% CI .69 - .88)

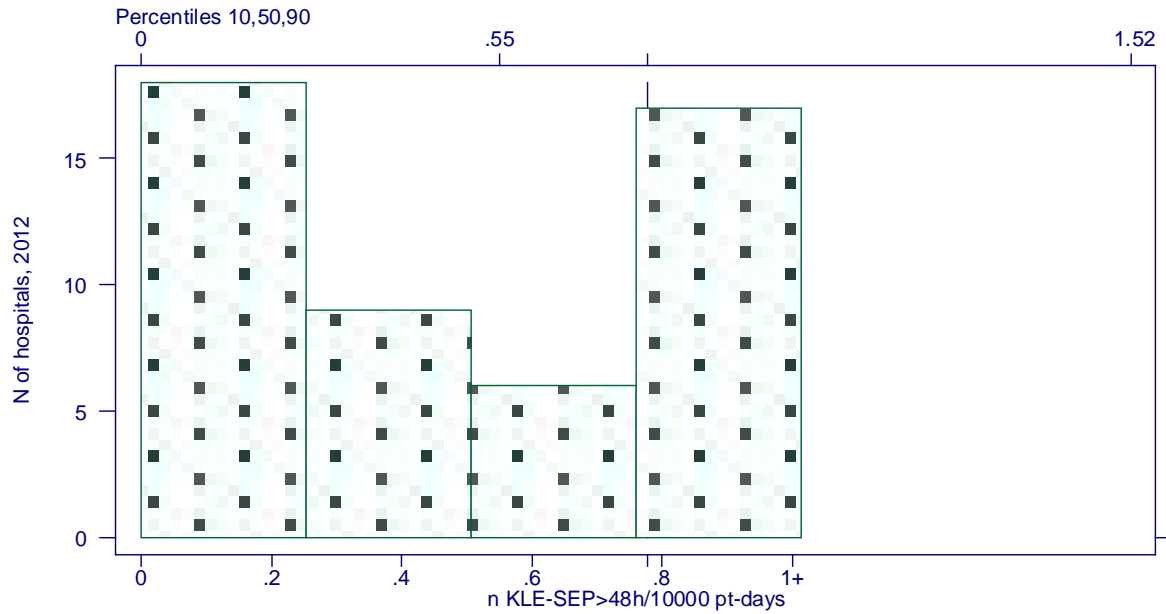


Figure 28. Incidence SEP with Gram-negative non-fermenters

Belgium, 2012 (mean) : .64 /10000 pt-days (95% CI .56 - .73)

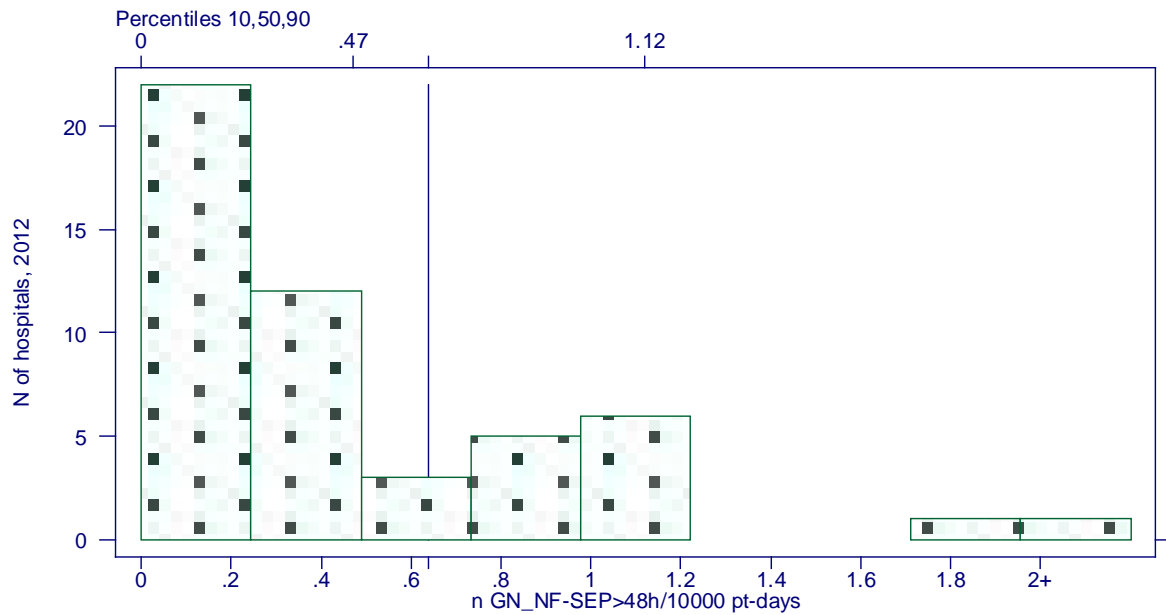


Figure 29. Incidence SEP with Pseudomonas spp.

Belgium, 2012 (mean) : .48 /10000 pt-days (95% CI .41 - .56)

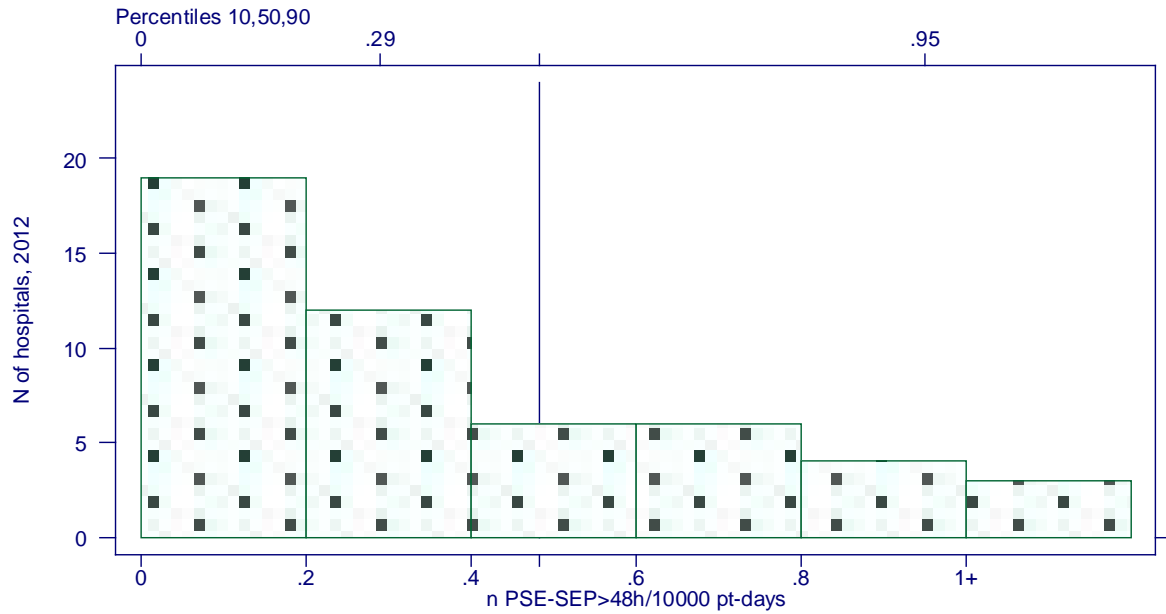


Figure 30. Incidence SEP with Candida spp.

Belgium, 2012 (mean) : .52 /10000 pt-days (95% CI .44 - .6)

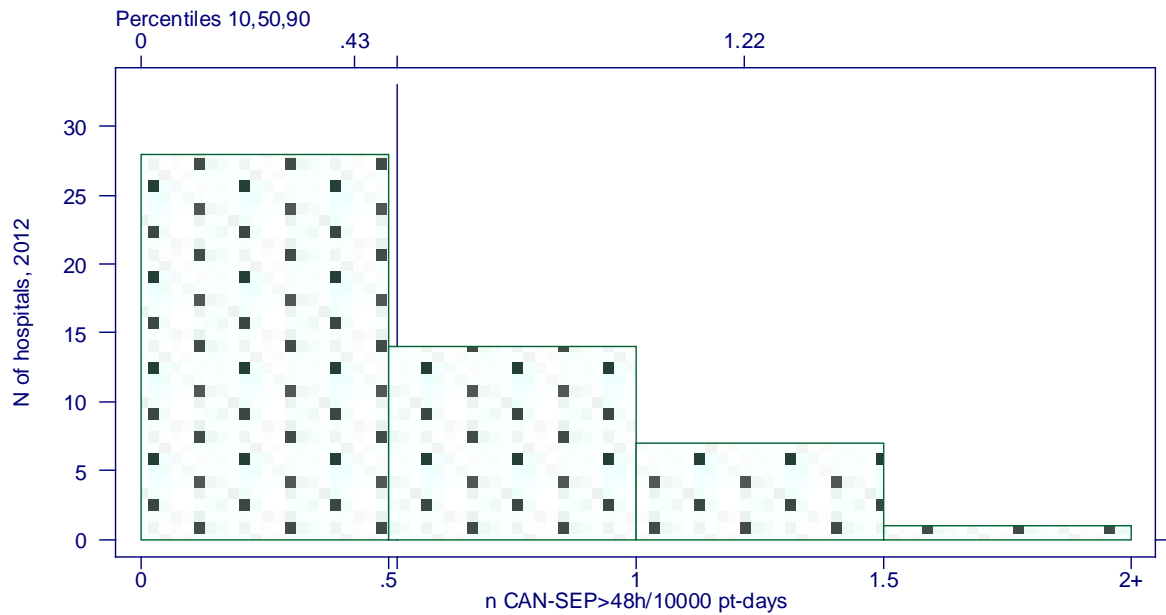


Figure 31. Mean age of patients with nosocomial septicemia

Belgium, 2012 (mean) : 69 years

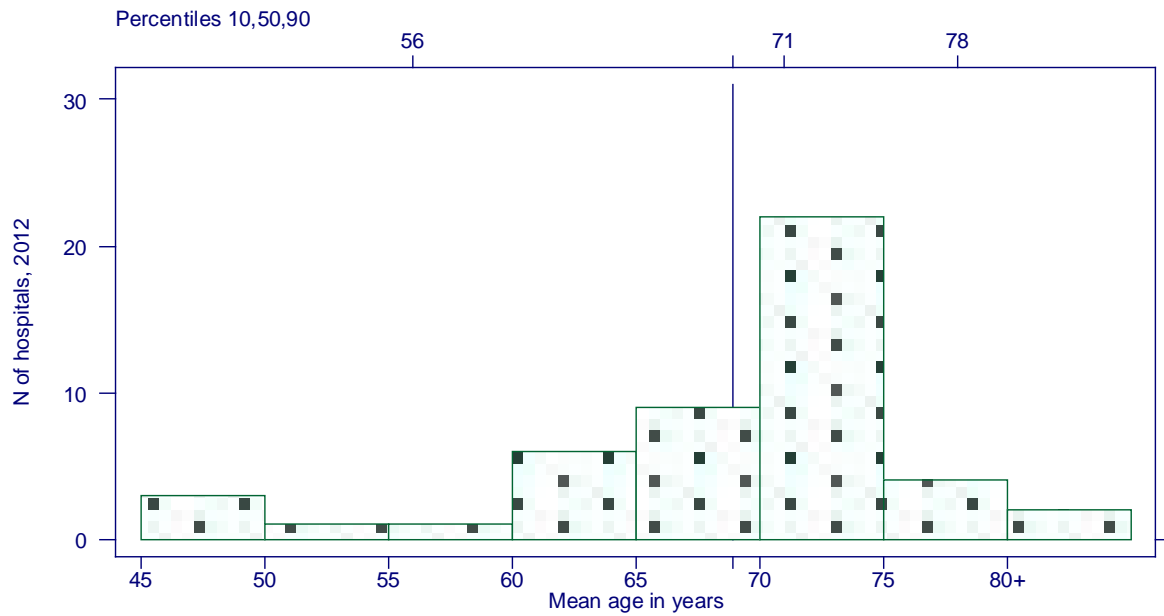


Figure 32. Mortality associated with nosocomial septicemia (%)

Belgium, 2012 (mean) : 25.2 % (95% CI 23.6 - 26.8)

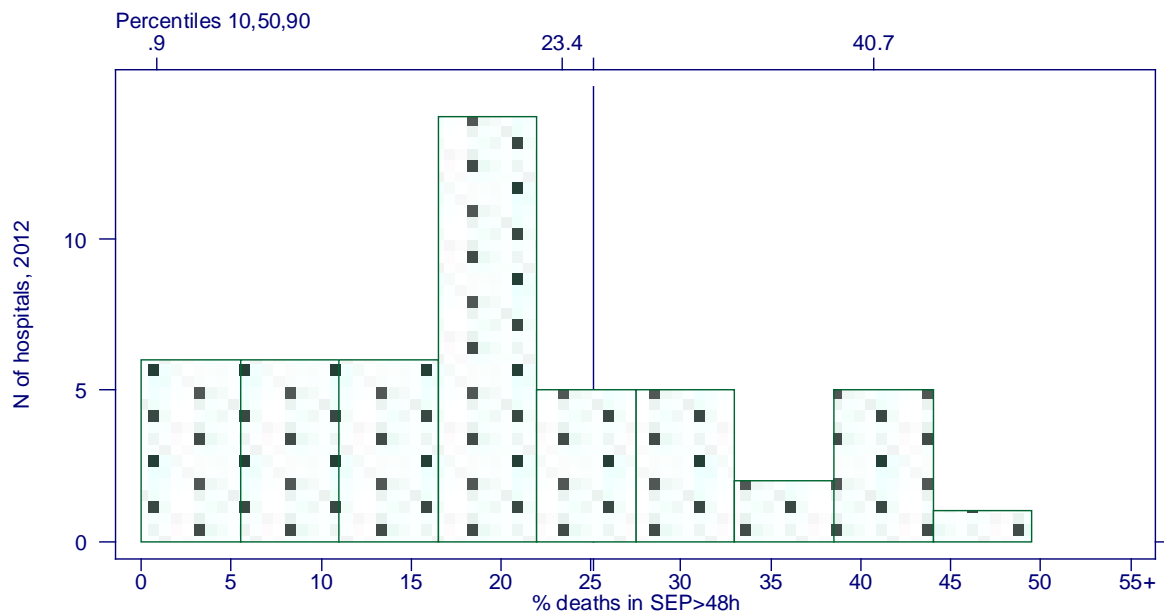




Figure 33. Mean n of admissions in database by hospital

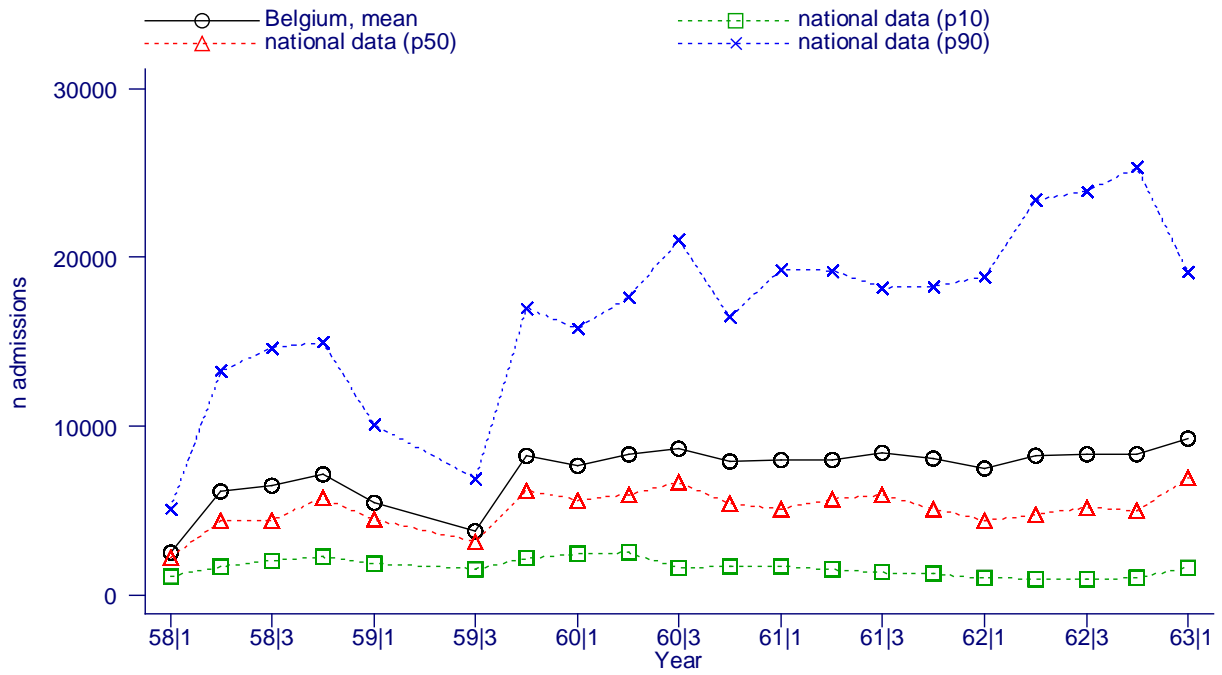


Figure 34. Mean n of monthly admissions

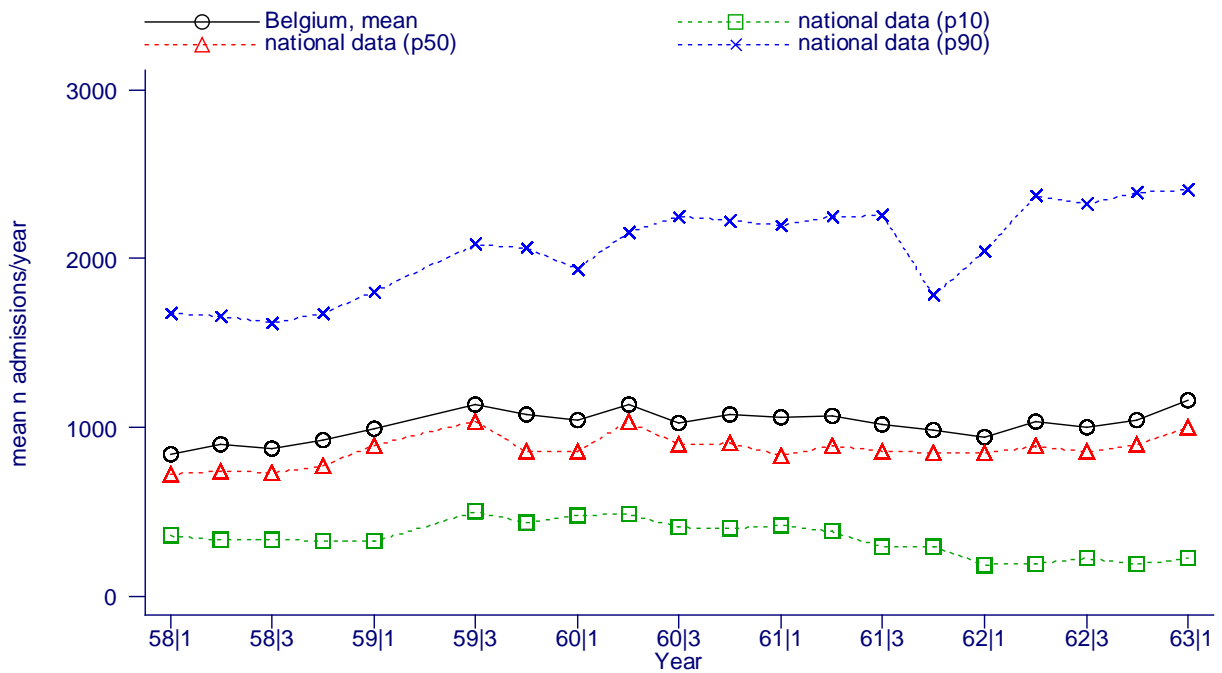


Figure 35. Mean length of stay by year

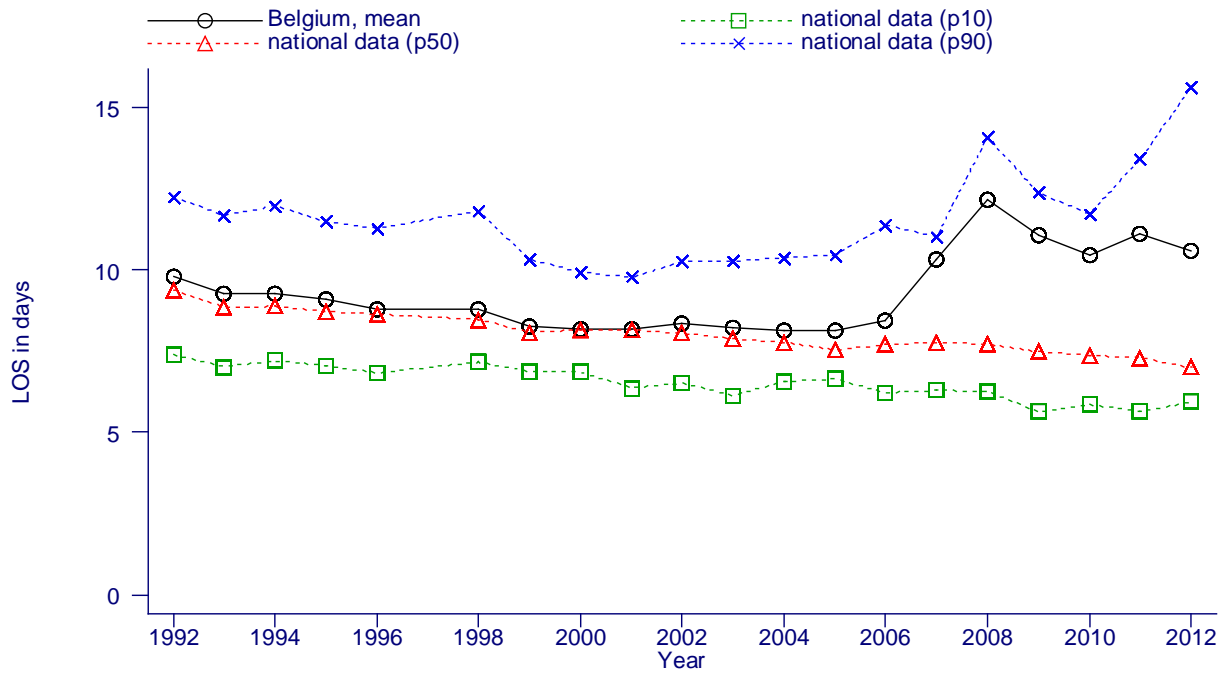


Figure 36. Number of hemocultures per 1000 patient-days

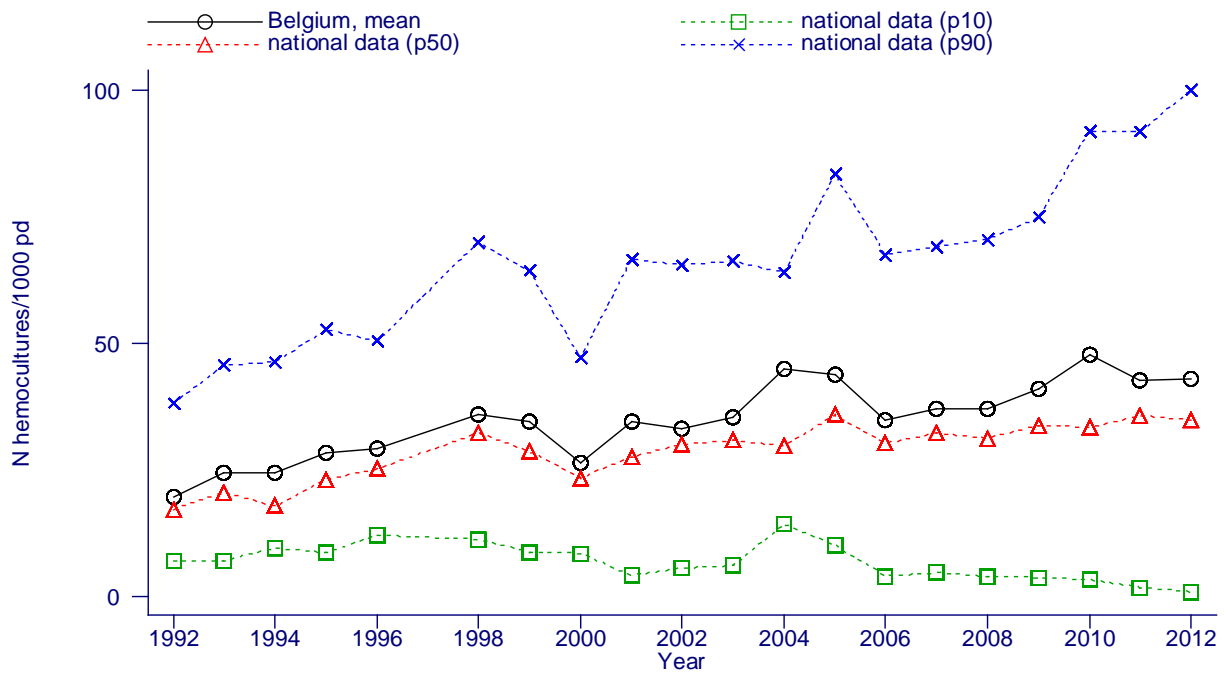


Figure 37. SEP incidence/10000 pt.days by year

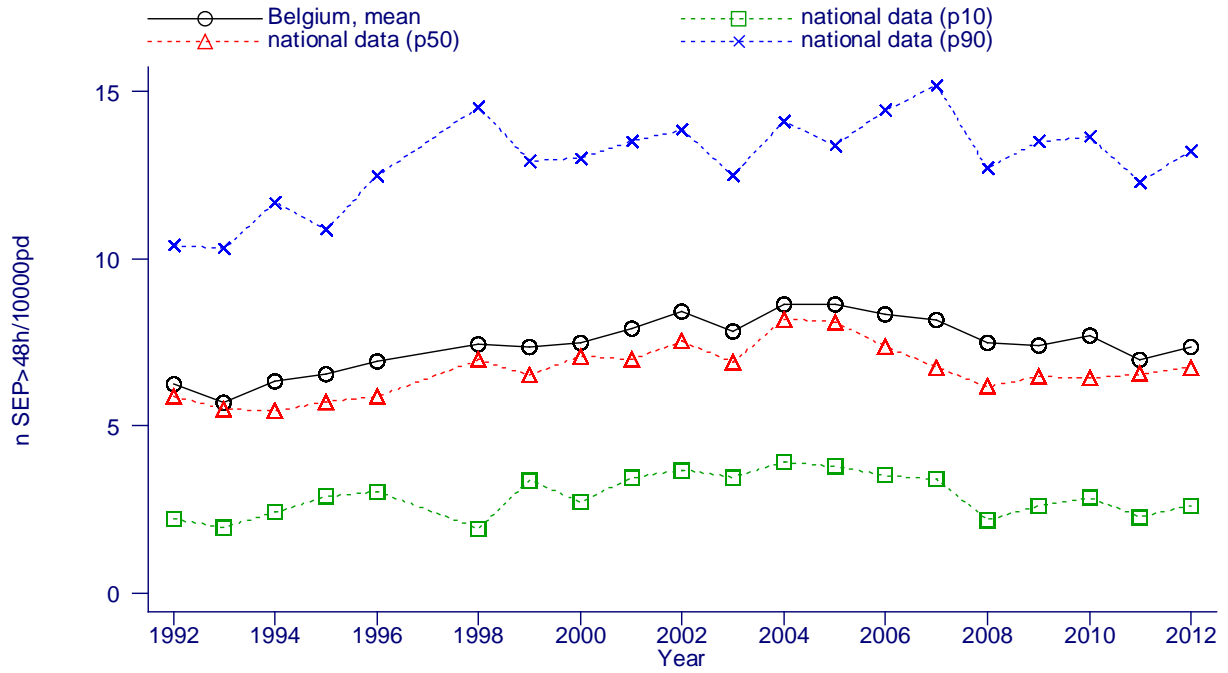


Figure 38. SEP incidence/10000 pt.days by quarter

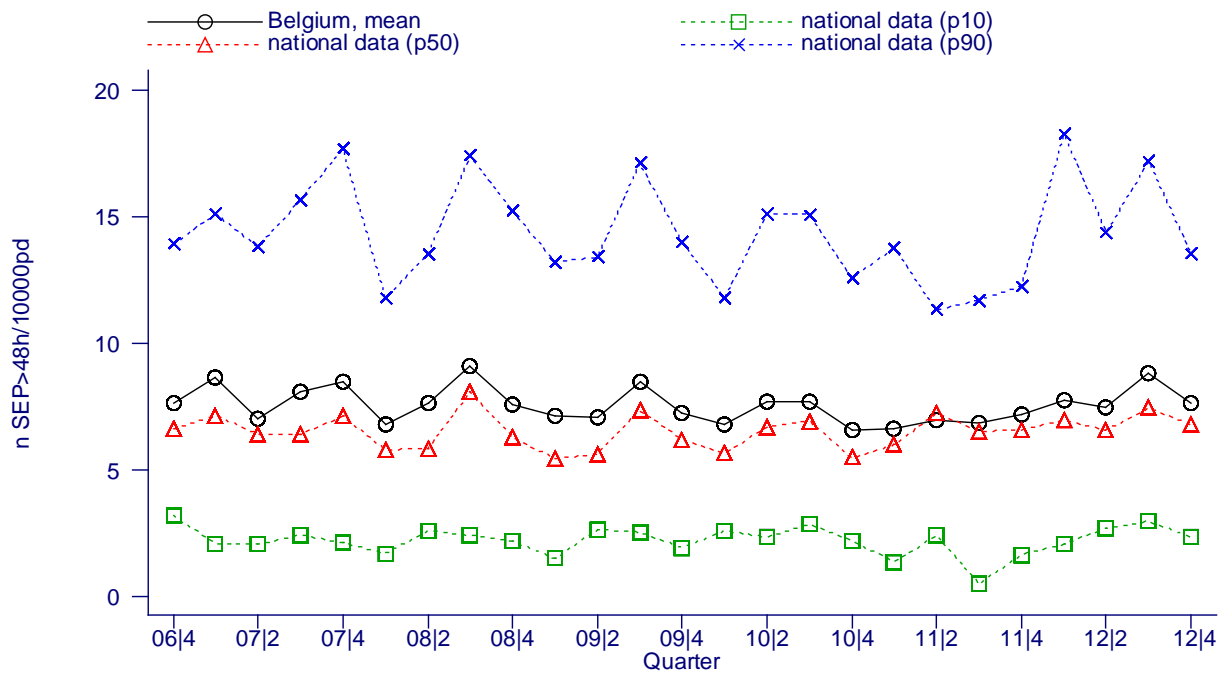


Figure 39. SEP incidence by origin and by year

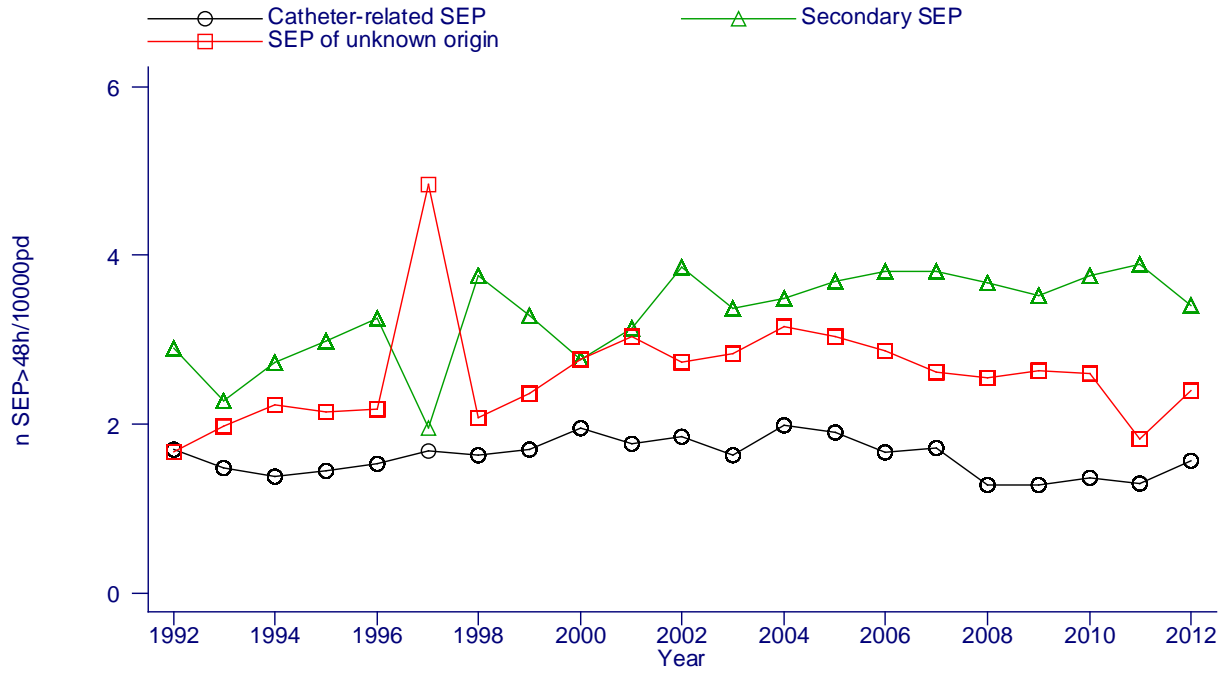


Figure 40. Catheter-SEP incidence/10000 pt.days by quarter

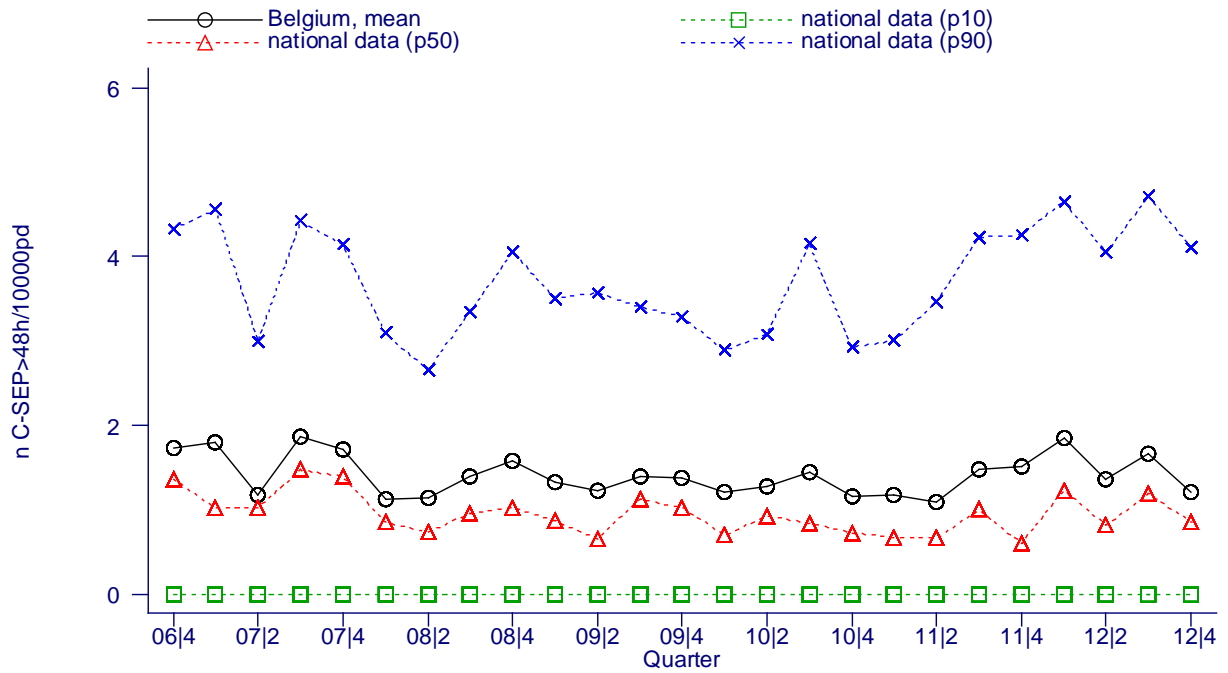


Figure 41. Incidence SEP with coagulase-negative staphylococci

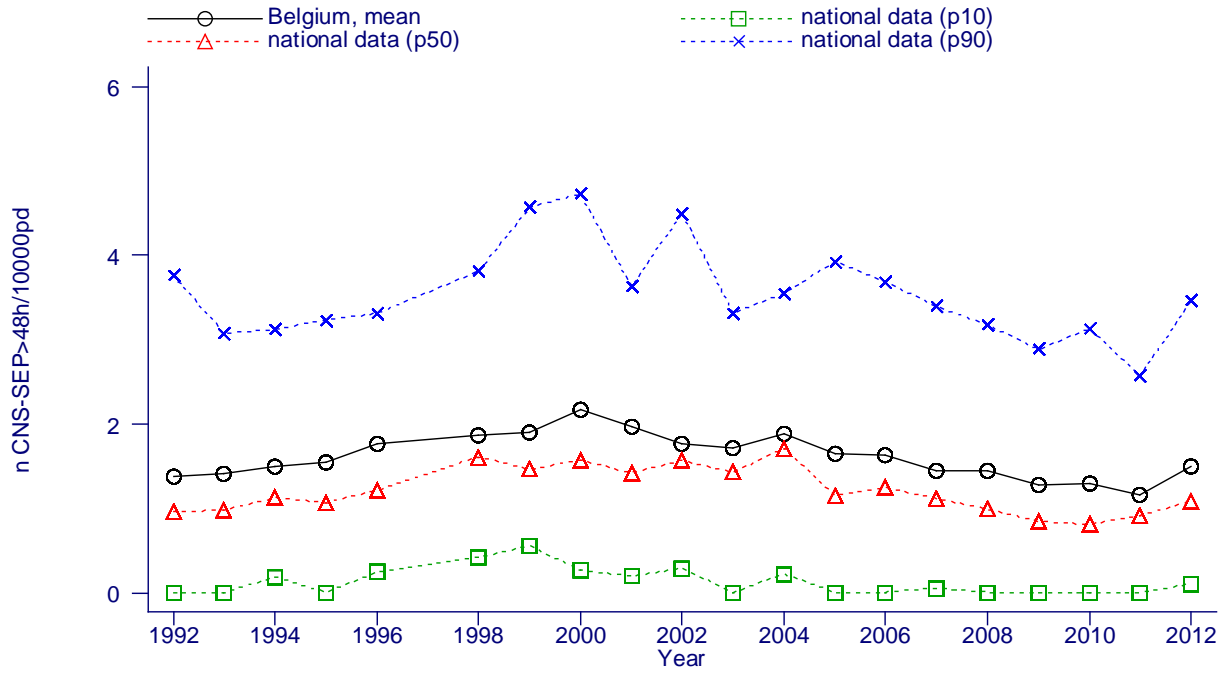


Figure 42. Incidence SEP with S.aureus

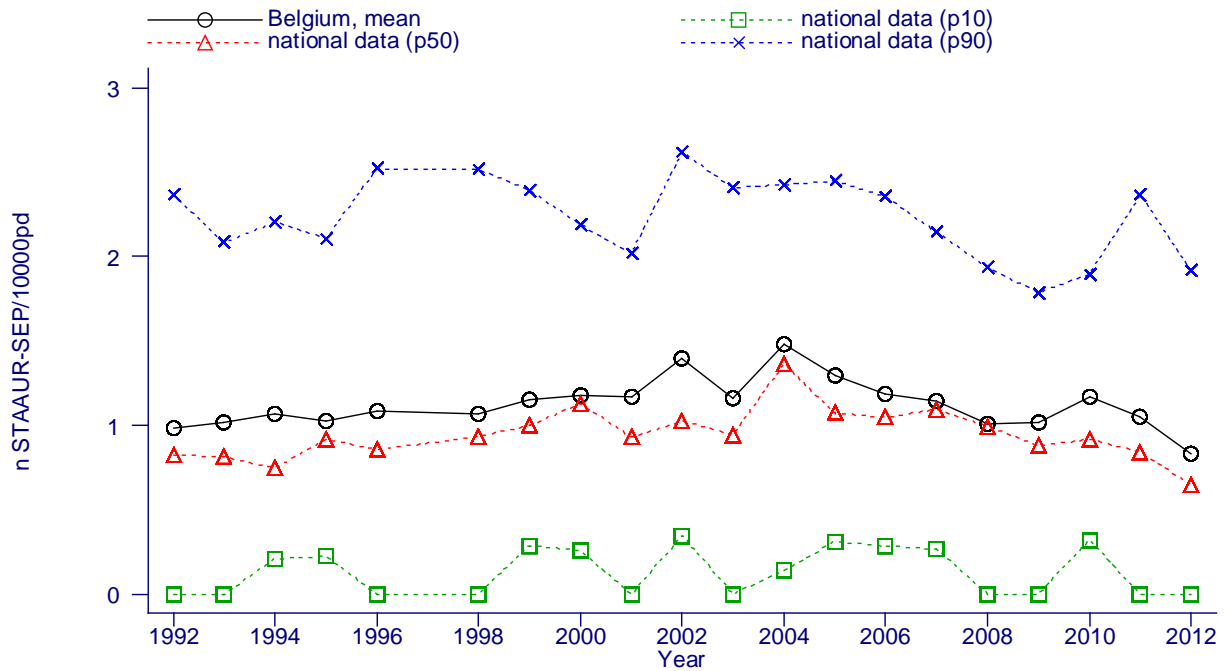


Figure 43. Incidence SEP with Enterococcus spp.

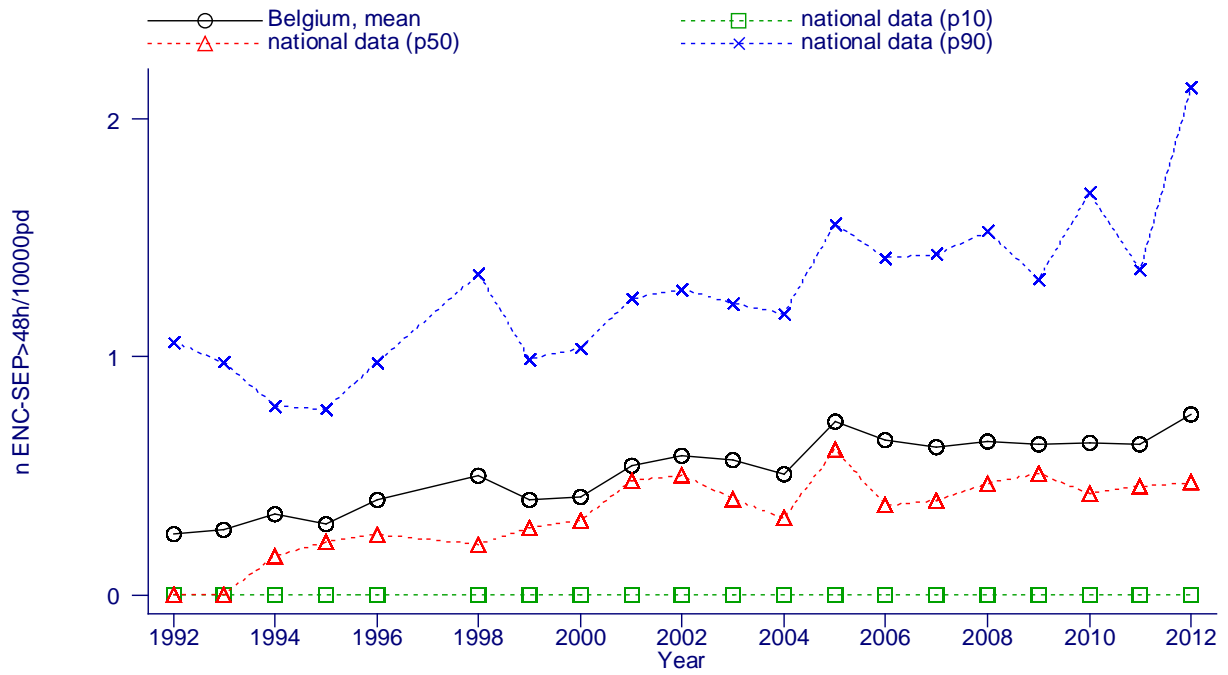


Figure 44. Incidence SEP with Streptococcus spp.

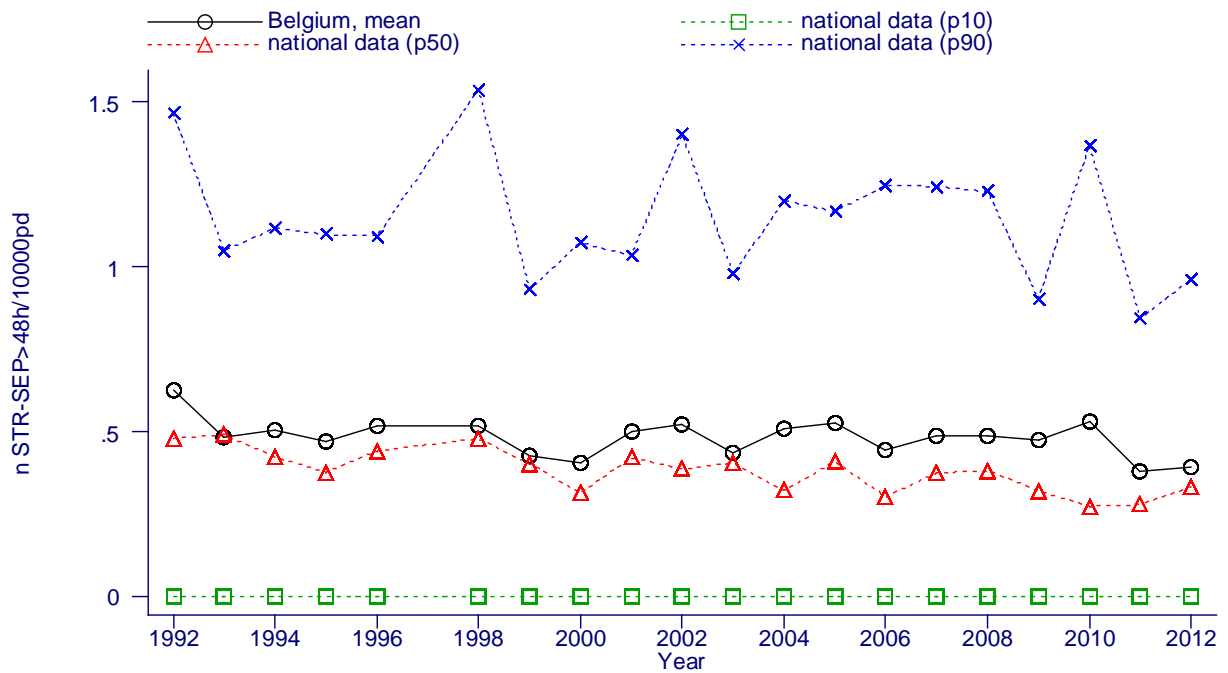


Figure 45. Incidence SEP with Escherichia spp.

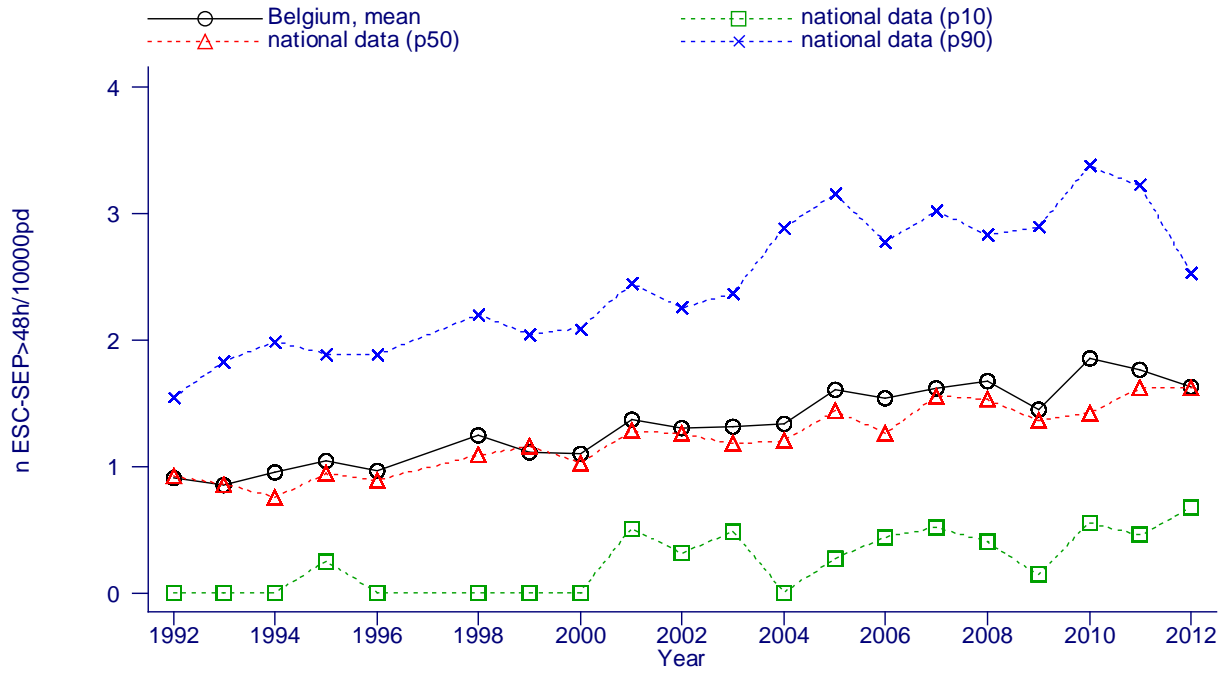


Figure 46. Incidence SEP with Enterobacter spp.

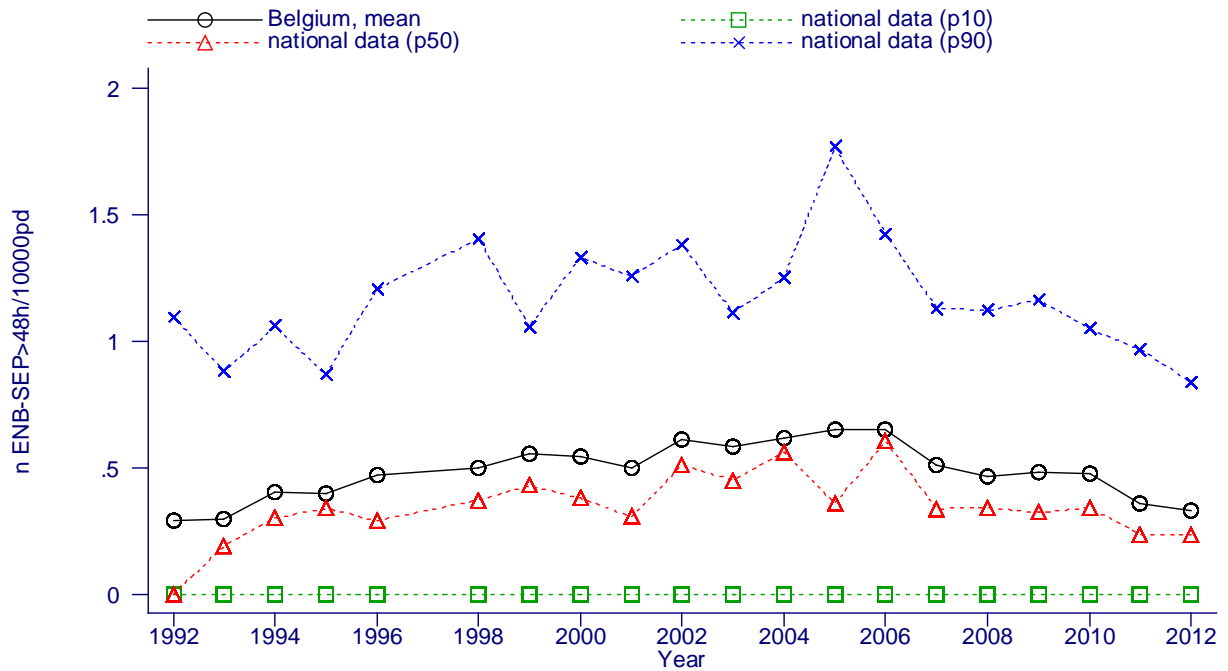


Figure 47. Incidence SEP with Klebsiella spp.

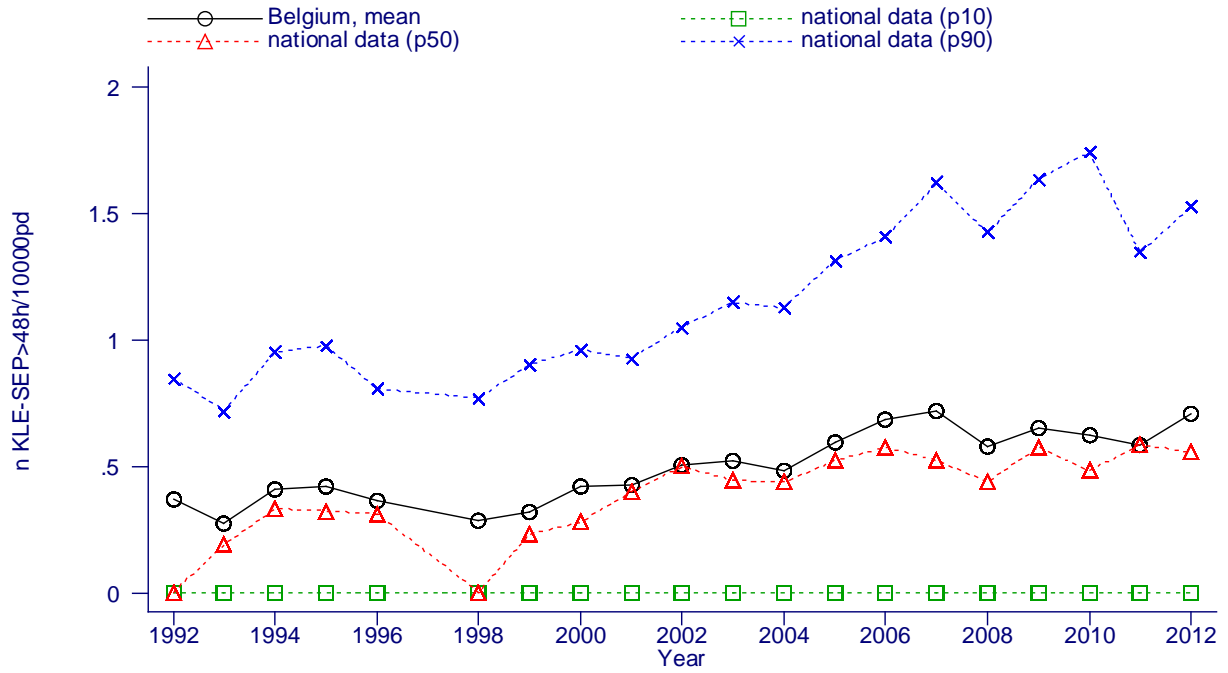


Figure 48. Incidence SEP with Serratia spp.

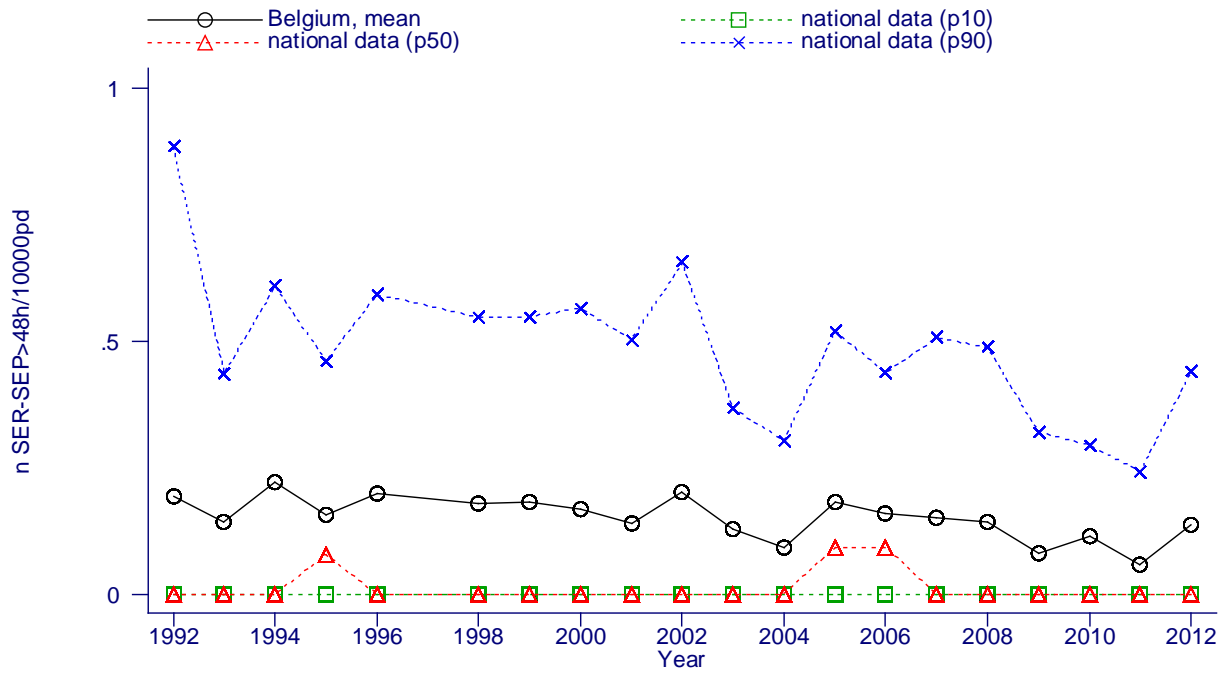




Figure 49. Incidence SEP with *Proteus* spp.

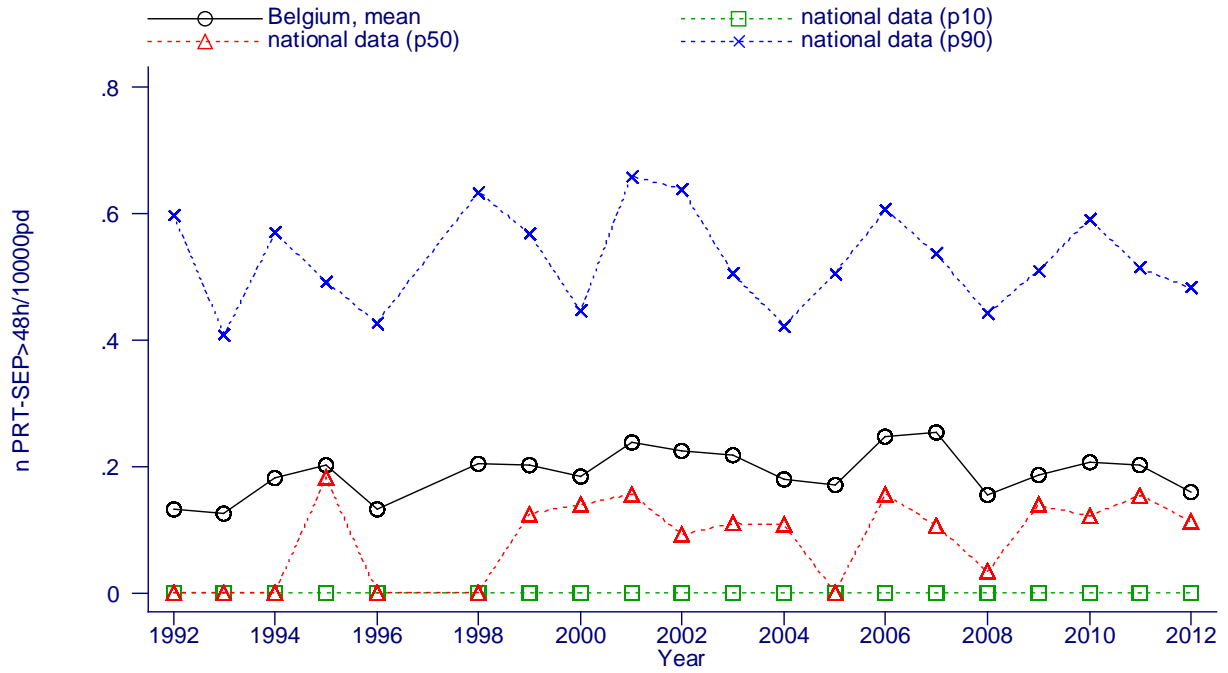


Figure 50. Incidence SEP with *Pseudomonas* spp.

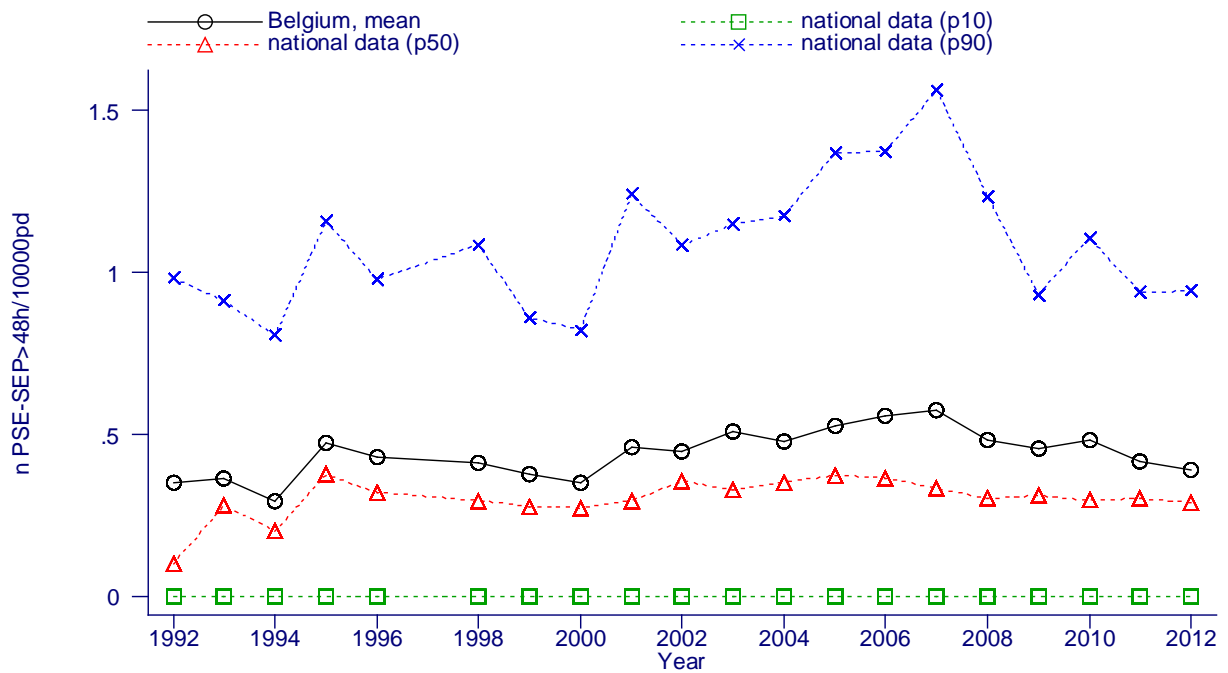


Figure 51. Incidence SEP with Acinetobacter spp.

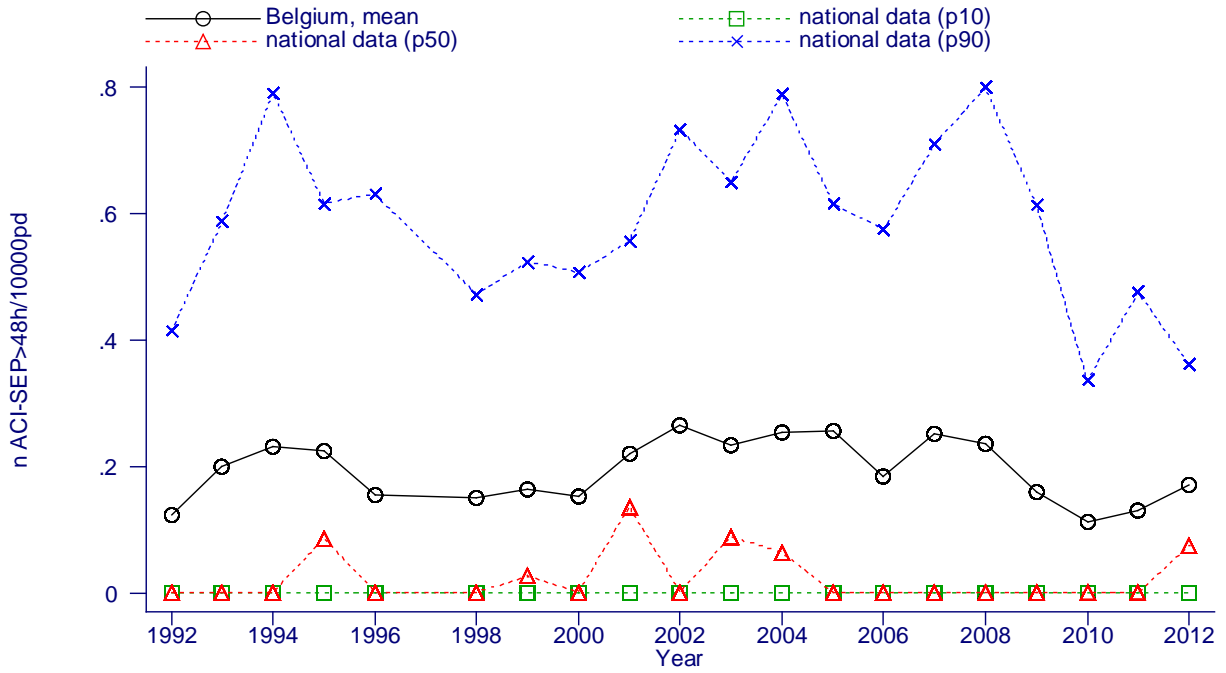


Figure 52. Incidence SEP with Stenotrophomonas spp.

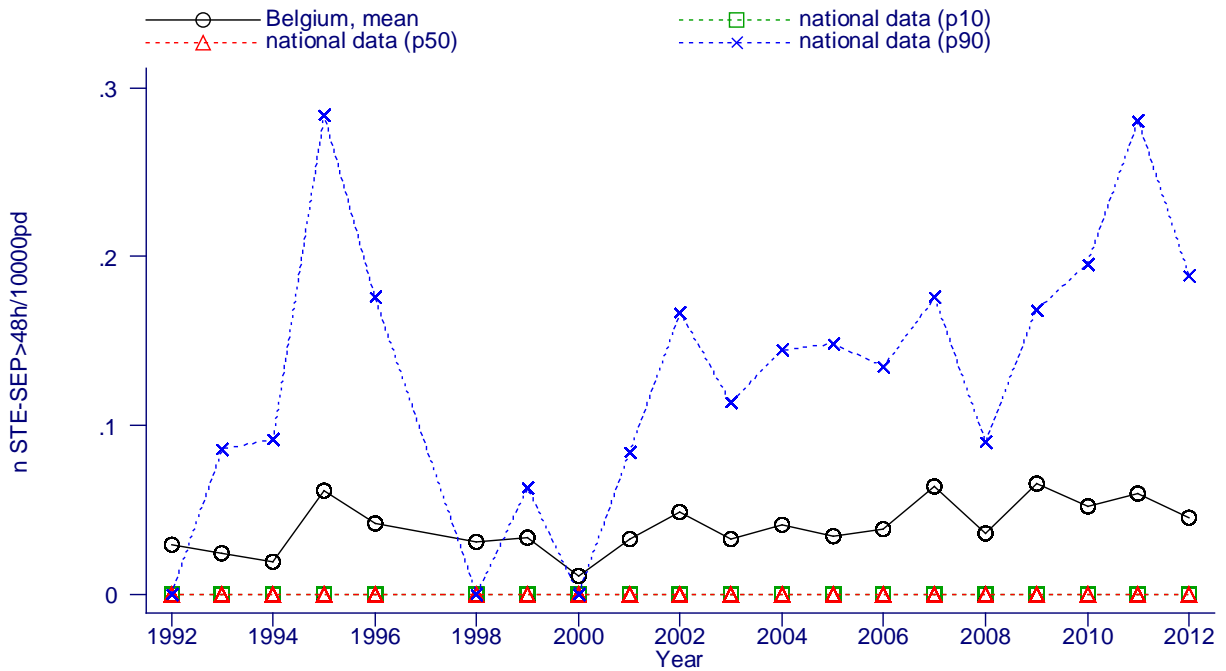


Figure 53. Incidence candidemia

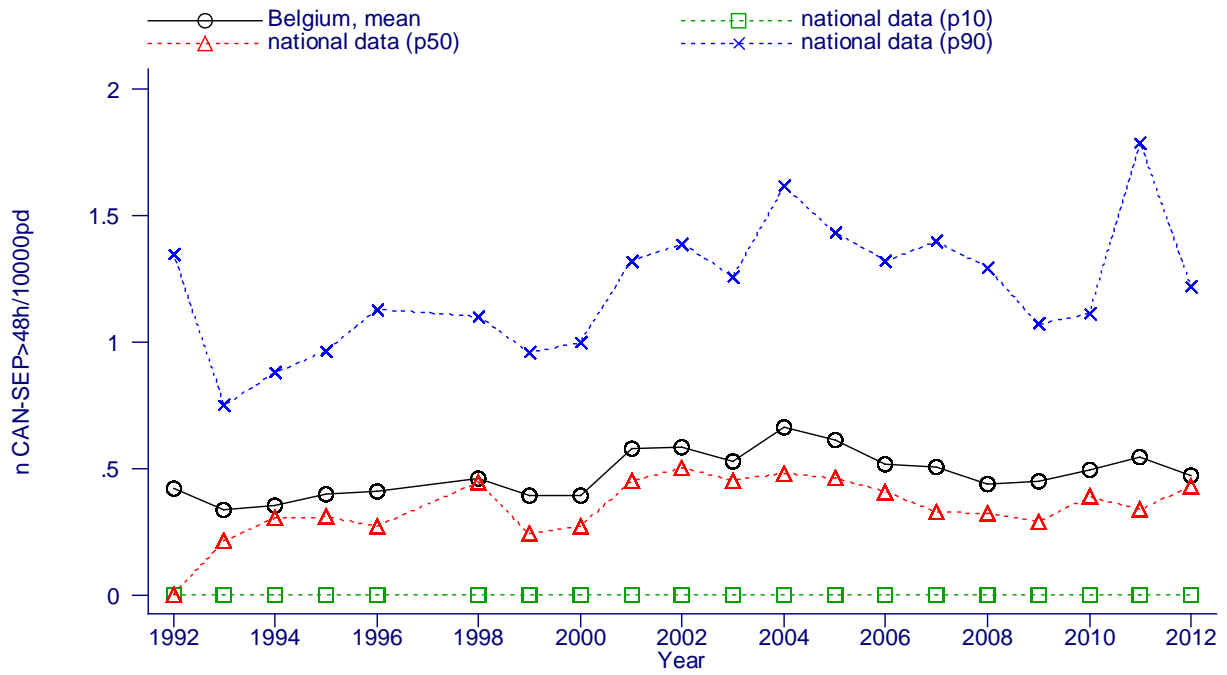


Figure 54. Mortality in nosocomial septicemia (%)

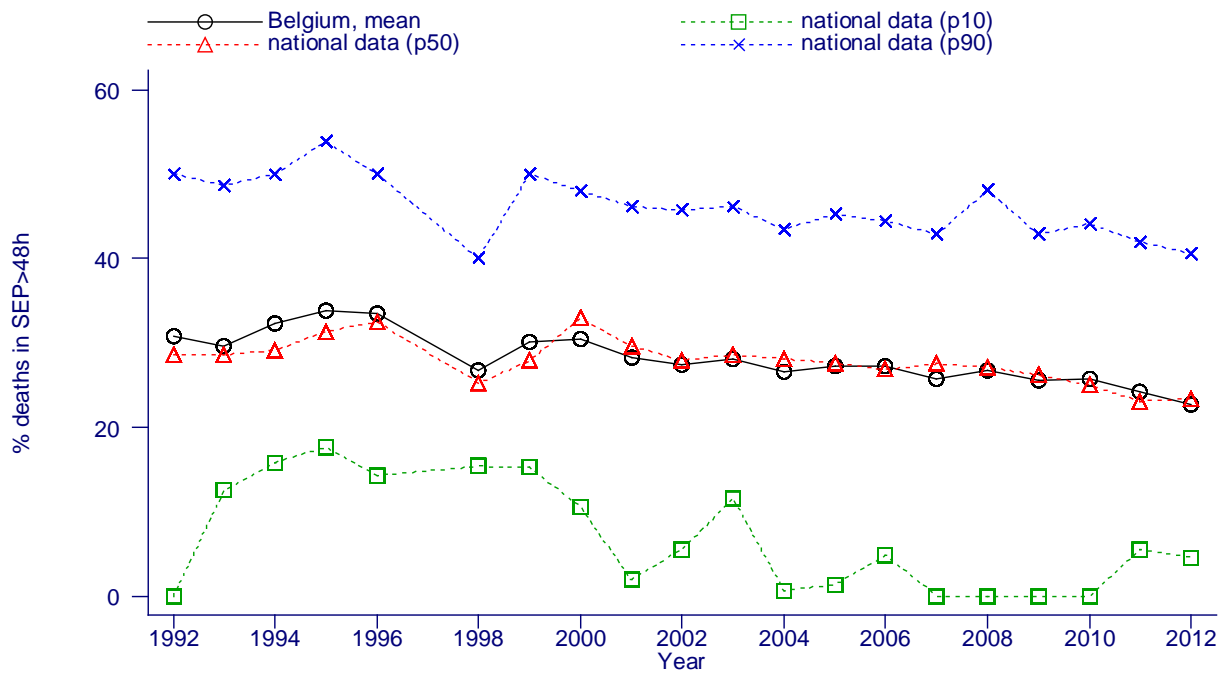


Figure 55. Mortality within 7 days after onset infection (%)

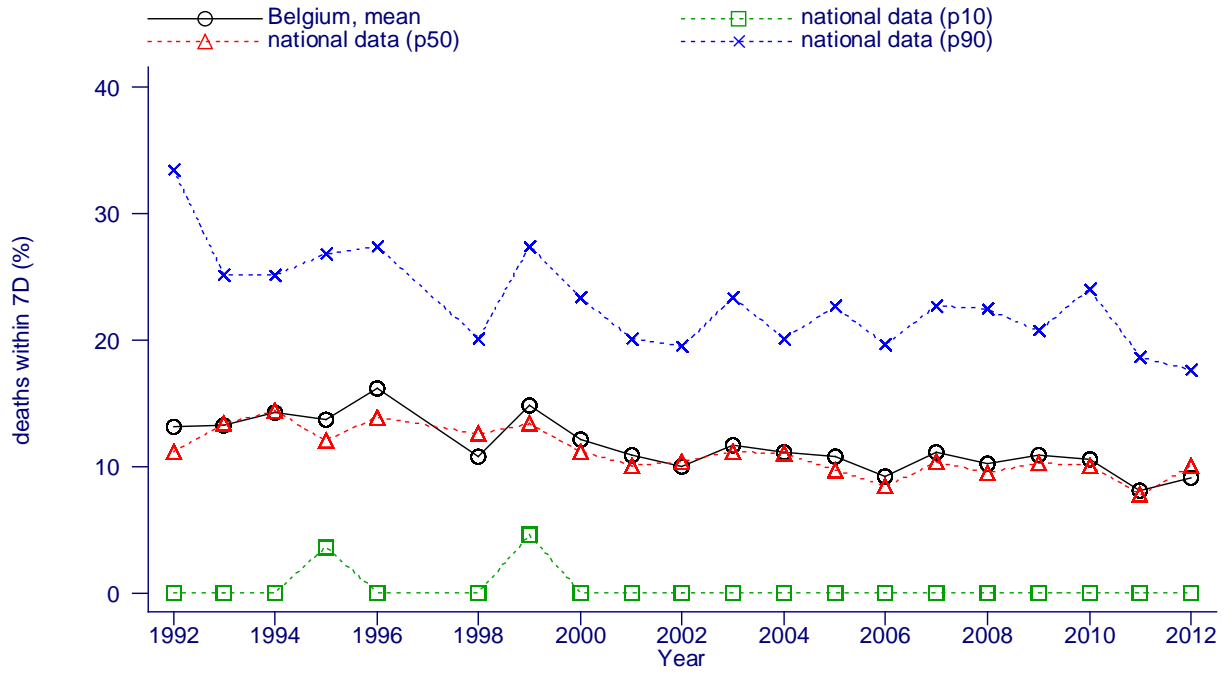


Figure 56. Mean age of patients with septicemia

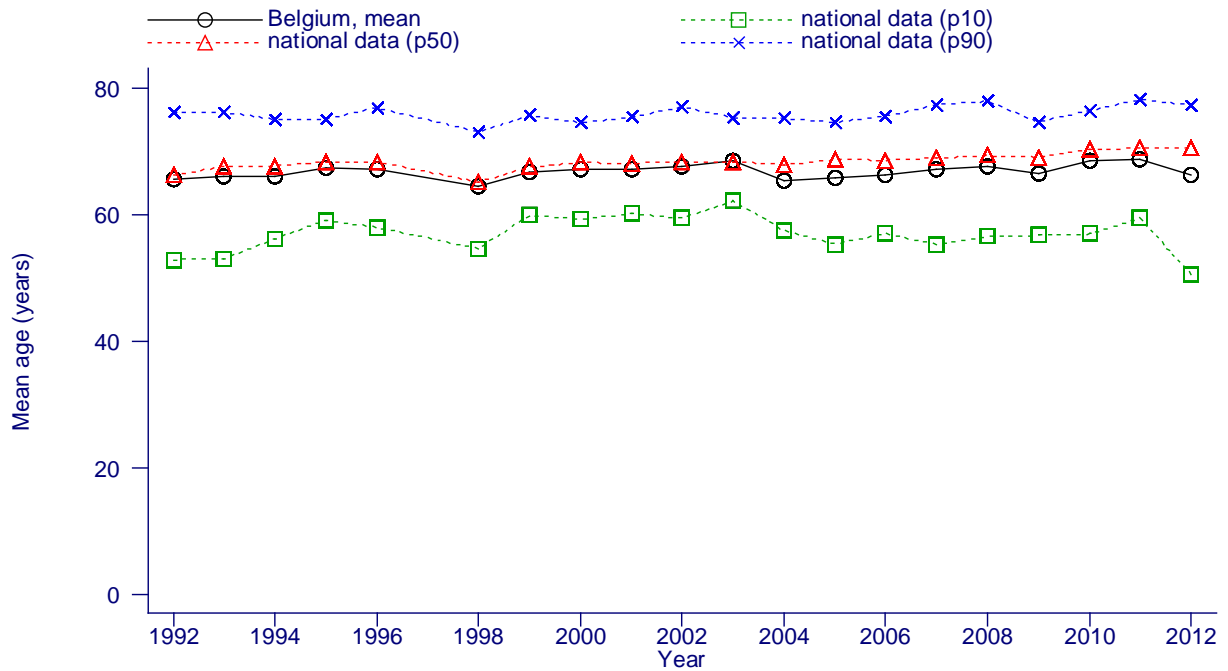


Figure 57. Mean length of stay of patients with septicemia

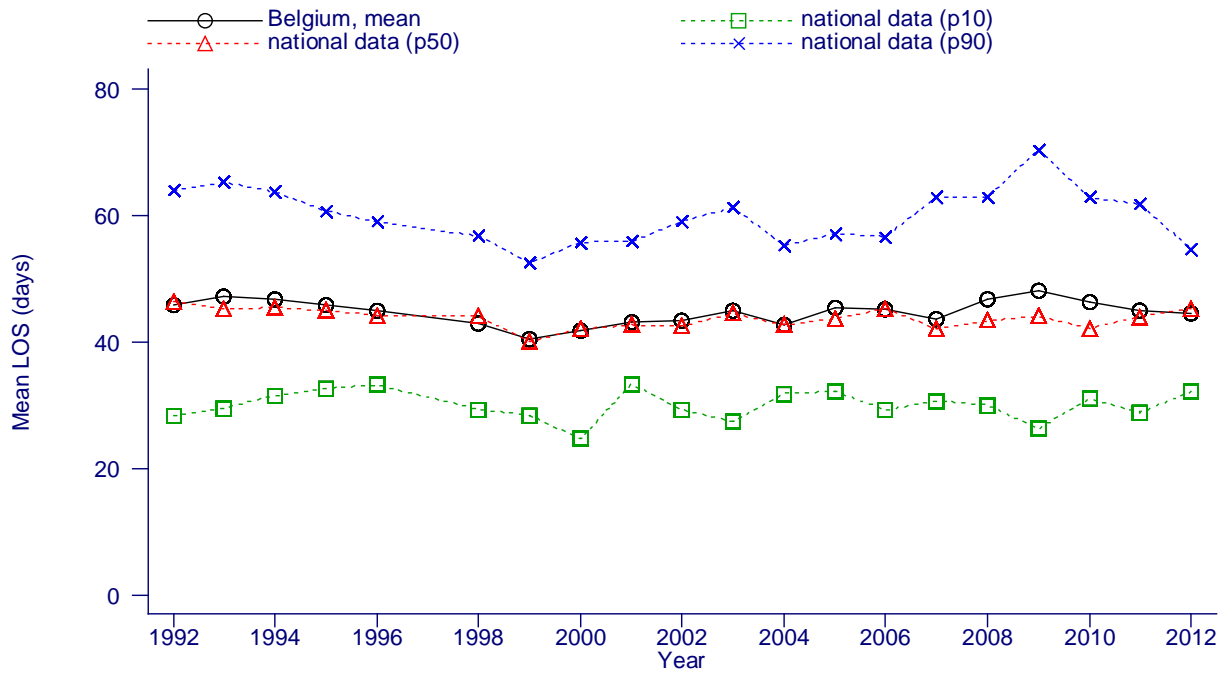


Figure 58. Mean length of stay after SEP in survivors

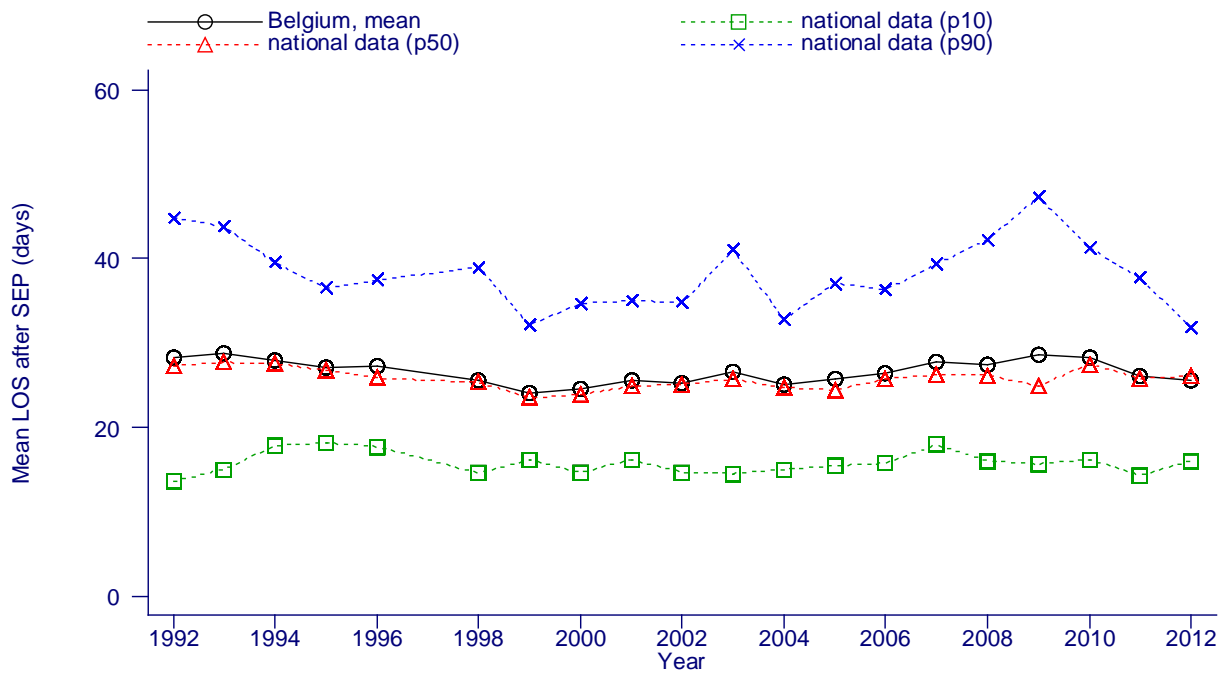


Figure 59. Mean n of days before septicemia

